

TFTST-A20, TFTST-B20
Setup Guide for ST-B20
Windows 2000 / XP / Vista / 7 /
WEPOS / POSReady 2009

TOSHIBA TEC CORPORATION

First Edition: February 19, 2009
Second Edition: September 28, 2009
Third Edition: October 29, 2010

Table of Contents

1.	Introduction	2
2.	Set up for Windows 2000	3
2.1.	Installation of Elo Touch Panel Driver	3
2.2.	Installation of i-Button Driver.....	9
3.	Set up for Windows XP (or WEPOS, POSReady 2009).....	19
3.1.	Installation of Elo Touch Panel Driver	19
3.2.	Installation of i-Button Driver.....	25
4.	Setup for Windows Vista Business.....	28
4.1.	Installation of Elo Touch Panel Driver	28
4.2.	Installation of i-Button Driver.....	35
5.	Setup for Windows 7 Professional.....	38
5.1.	Installation of Elo Touch Panel Driver	38
5.2.	Installation of i-Button Driver.....	45
6.	Notice and Limitation	48
6.1.	Notice	48
6.1.1.	Notice of touch panel driver installation.....	48
6.1.2.	About the necessity of the touch panel reset related to a setting change of the display	48
6.2.	Limitation	49
6.2.1.	Warning message on Control Panel of Touch Panel driver	49

Copyright © 2010 Toshiba TEC Corporation All rights reserved. It is prohibited to use or duplicate a part or whole of this document without the permission of Toshiba TEC Corporation.

This document is subject to change without prior notice.

Trademark Notification

- * Microsoft, Windows, Windows 2000, Windows XP, Windows Vista and Windows 7 are registered trademarks of Microsoft Corporation in the United States and/or other countries.
The official name of Windows is the "Microsoft Windows Operating System".
- * iButton and 1-Wire are registered trademarks of Dallas Semiconductor Corp. Dallas Semiconductor is a wholly owned subsidiary of Maxim Integrated Products, Inc.
- * All other product names mentioned in this document are trademarks or registered trademarks of their respective owners.

1. Introduction

This document describes the procedures and cautions for set up the drivers of TFTST-A20, TFTST-B20 on the ST-B20.

The outline of procedures to set up drivers on the ST-B20 is as follows.

Setup Procedure:

1. Installation of Elo Touch Panel Driver
2. Installation of i-Button Driver

Note: In the future, product configuration or model number about TFTST-A20 and TFTST-B20 may be changed.

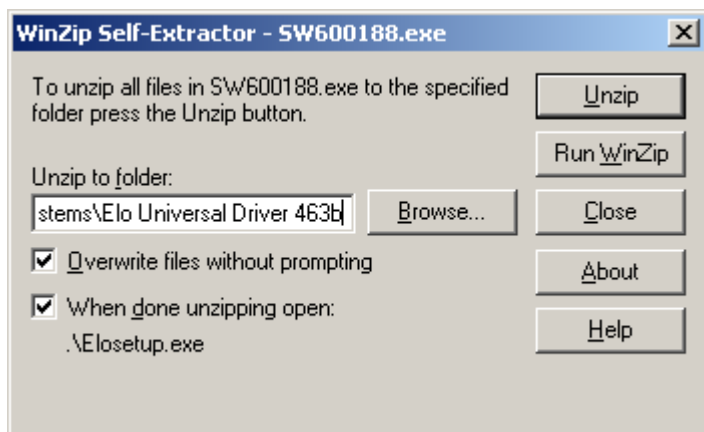
2. Set up for Windows 2000

2.1. Installation of Elo Touch Panel Driver

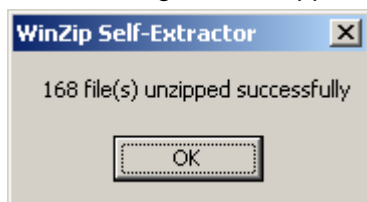
Run "SW600188.exe" in the "ST-B20¥Display¥TFTST-B20¥ELOTouchPanel¥2K" folder in the Driver Kit CD-ROM, and the following window appears. Click on the "OK" button.



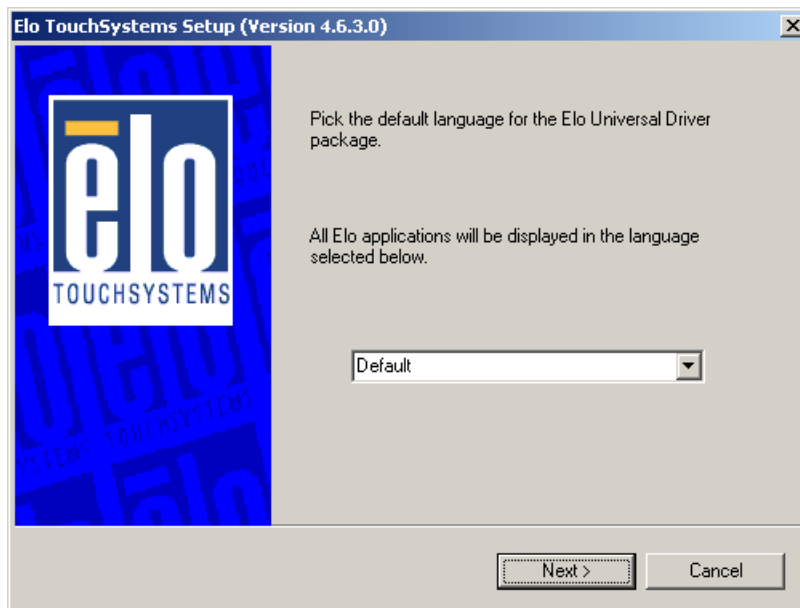
The following window appears. Click on the "Unzip" button, then the files are decompressed.



The following window appears. Click on the "OK" button.



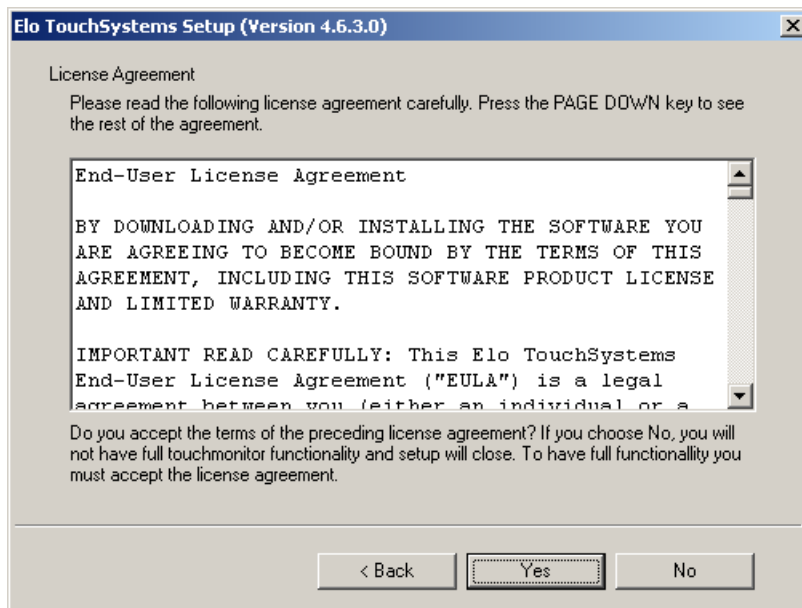
The following window appears. Choose a language, if necessary, and then click on the “Next” button.



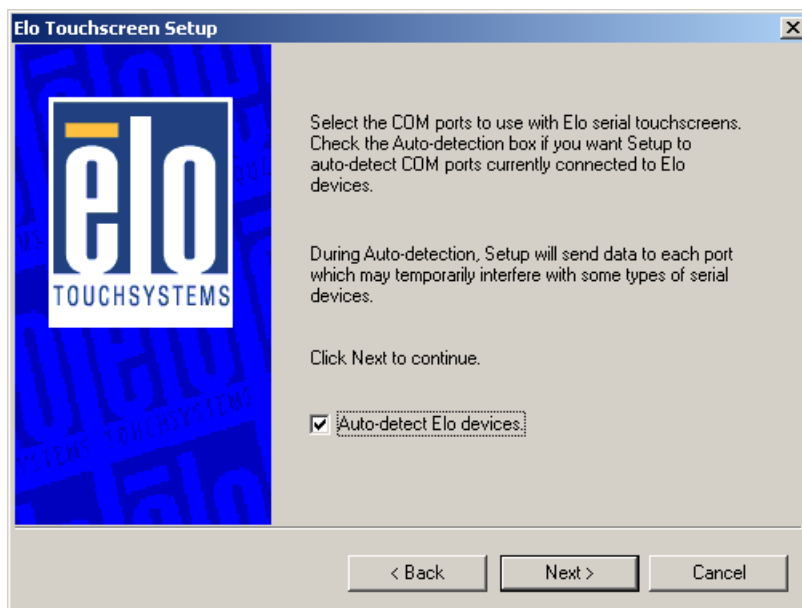
The following window appears. Check the “Install Serial Touchscreen Drivers” check box, then click on the “Next” button.



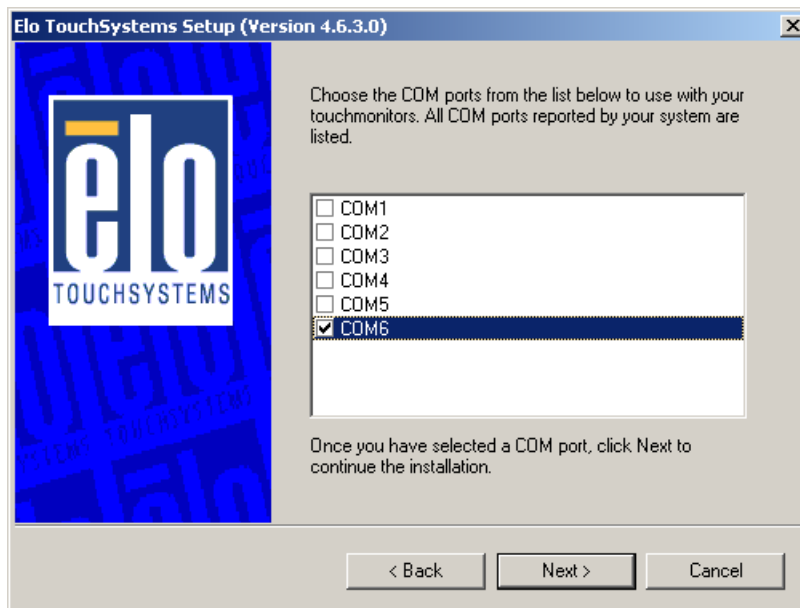
The “License Agreement” window appears. Confirm the contents. If you agree, click on the “Yes” button.



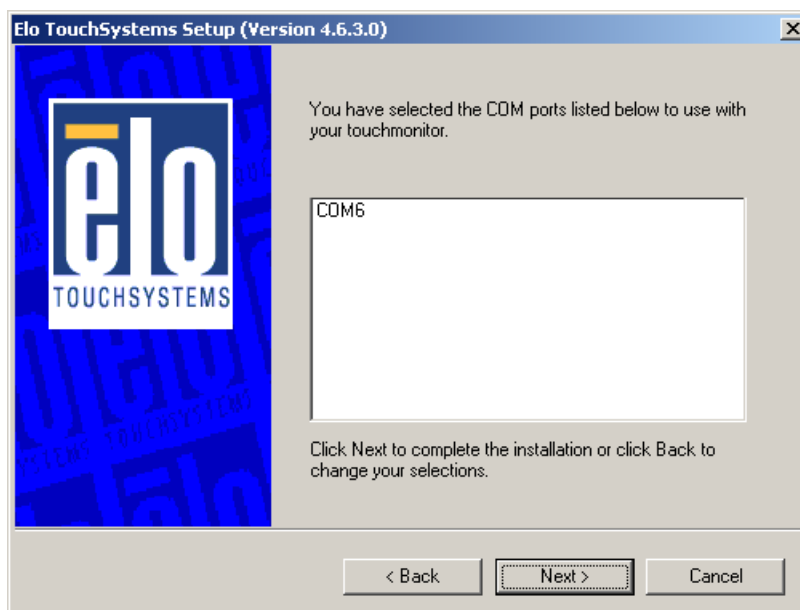
The following window appears. Check the “Auto-detect Elo devices” check box, then click on the “Next” button.



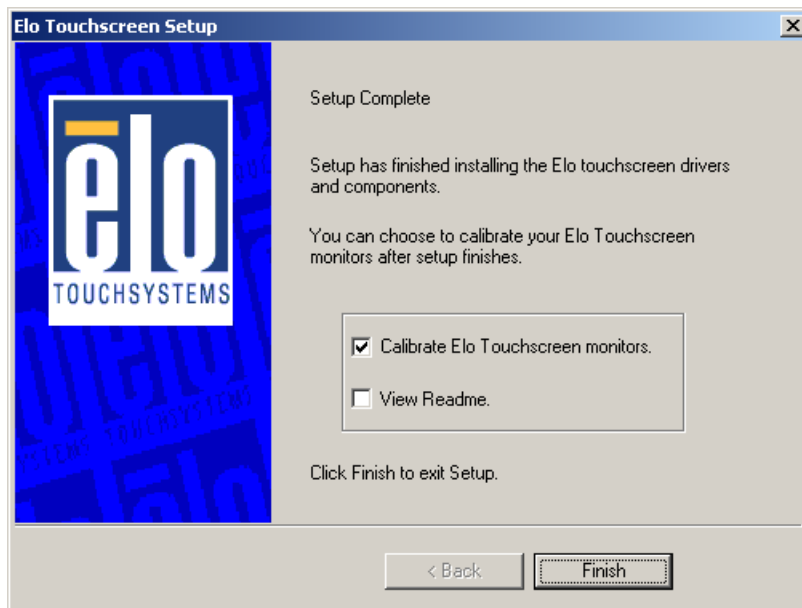
The following window appears. The touch panel connected to the ST-B20 is detected, and “COMx” is chosen. If “COMx” is not chosen, there may be a problem. Click on the “Next” button.



The following window appears. Click on the “Next” button.



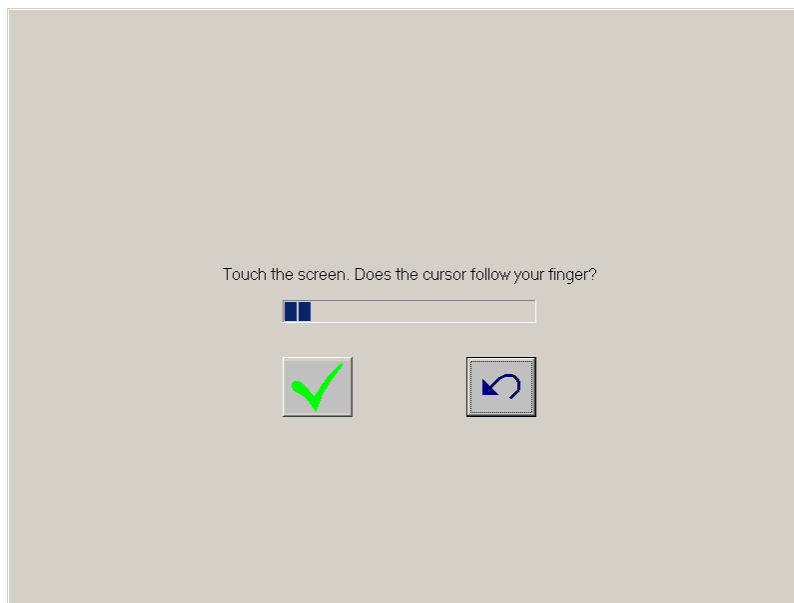
After completion of the installation, the following window appears. Check the “Calibrate Elo Touchscreen monitors” check box, and click on the “Finish” button.



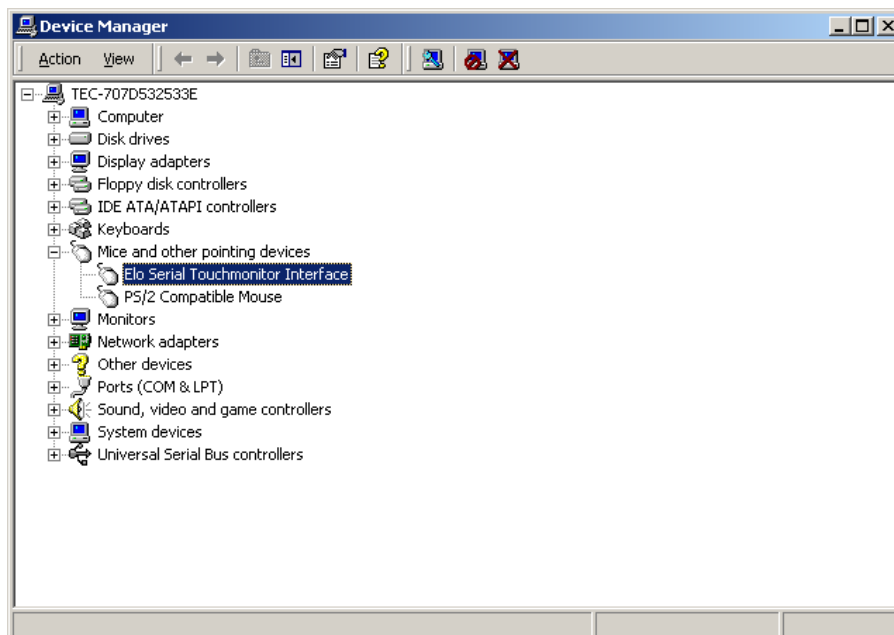
The following calibration screen appears. Perform a calibration by touching the mark whenever it appears. (The mark appears three times.)



After the mark was touched three times, two buttons appear at the center of the screen. Click on the check mark button to complete the calibration

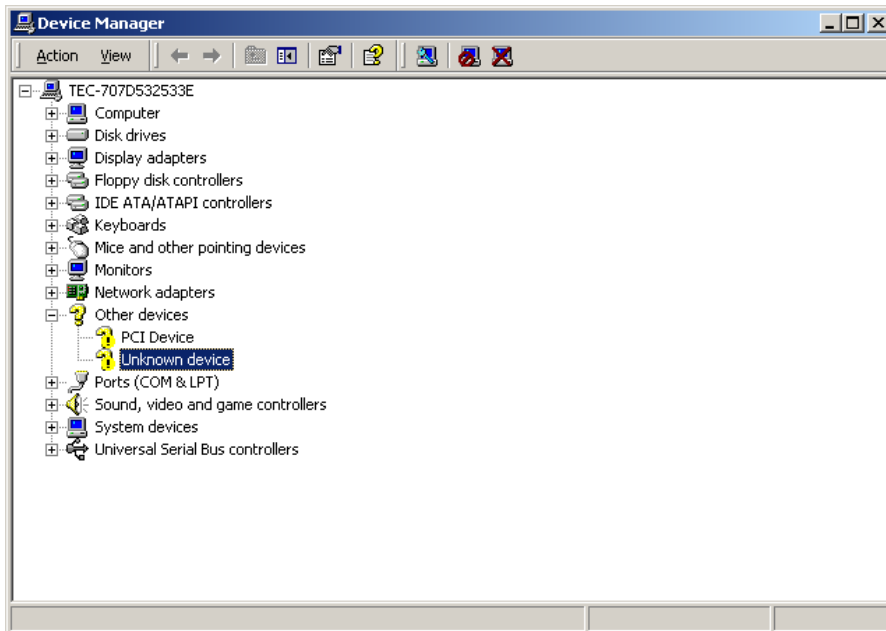


Open Device Manager to confirm the touch panel driver has been installed. Make sure that "Elo Serial Touchmonitor Interface" is registered under the "Mice and other pointing devices" icon.



2.2. Installation of i-Button Driver

When the iButton is connected to the ST-B20, “Unknown Device” is shown with an exclamationmark (!) under the “Other devices” icon in the Device Manager window.



We can not redistribute this installation driver.

Therefore, if you need the driver, you have to download the driver from following site.

<http://www.maxim-ic.com/products/ibutton/software/tmex/>

Note: This URL was written on 2008/7/30.

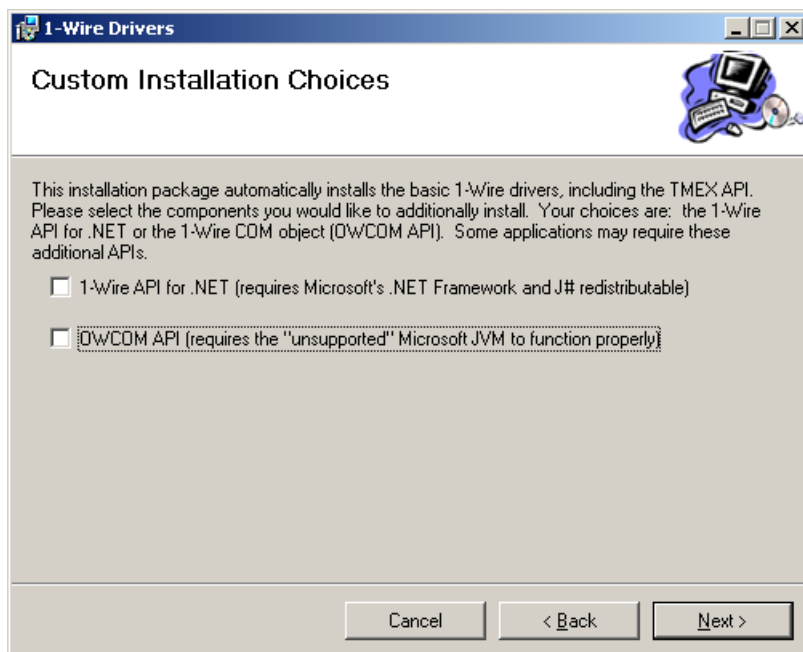
Run the “install_1_wire_drivers_v400.msi” which you downloaded. The following window appears. Click on the “Next” button.



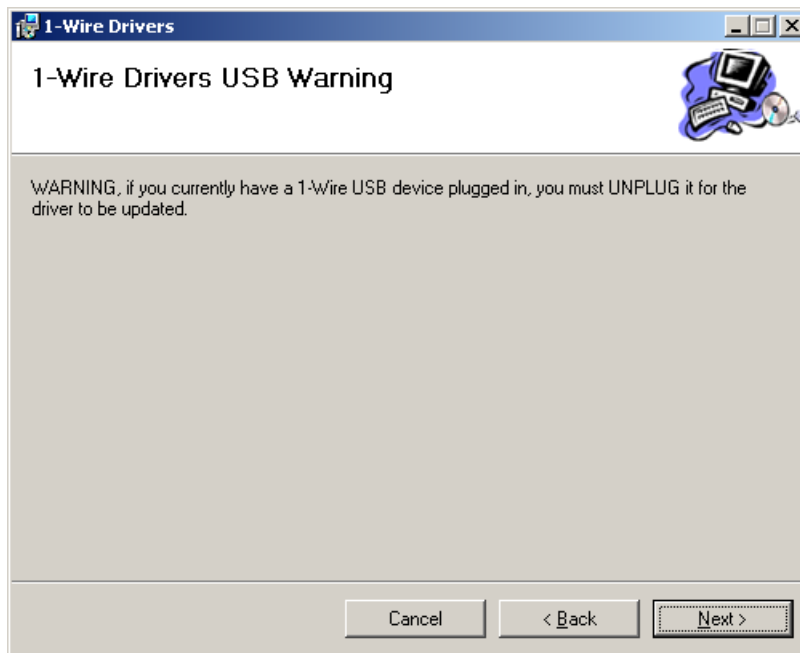
After a while, the “License Agreement” window appears. Confirm the contents. If you agree, check the “I Agree” radio button and click on the “Next” button.



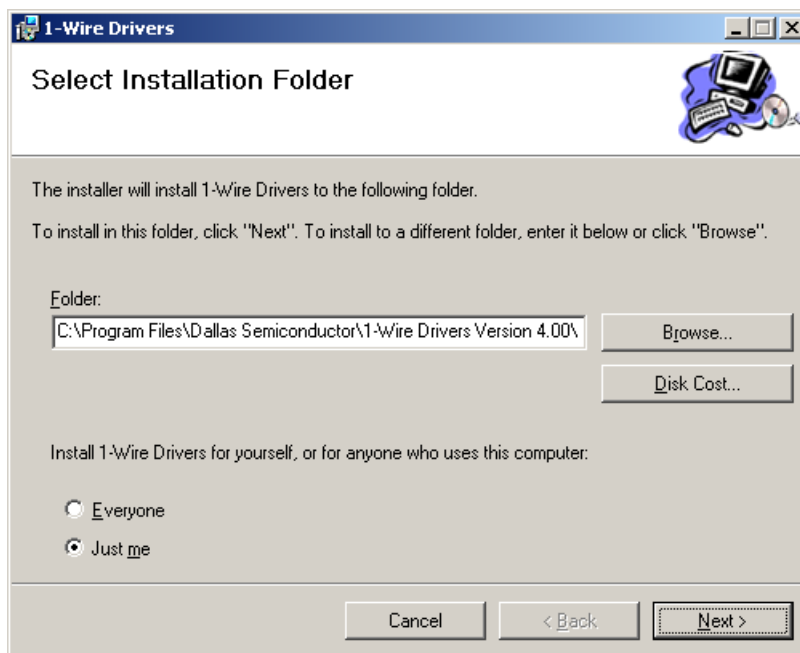
The following window appears. If you only use the Keylock OPOS Control, you don't need “1-Wire API for .NET” and “OWCOM API”. If you need these drivers, please check it. Then click on the “Next” button.



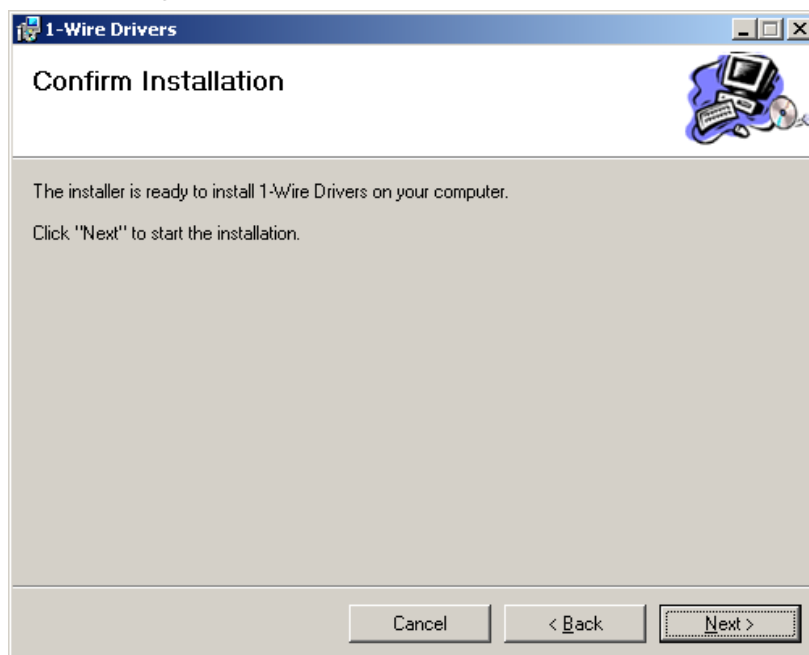
The following window appears. Click on the "Next" button.



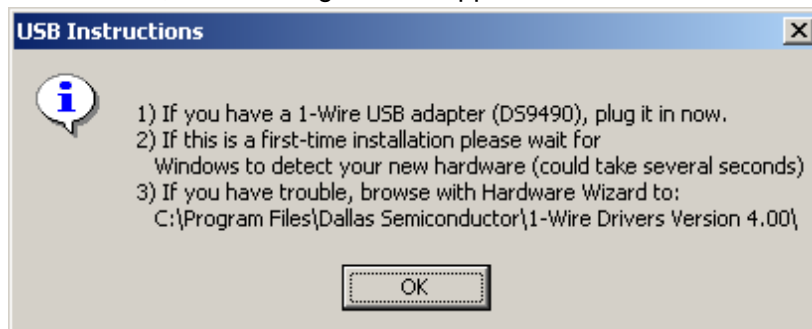
Configure the necessary settings, then click on the "Next" button.



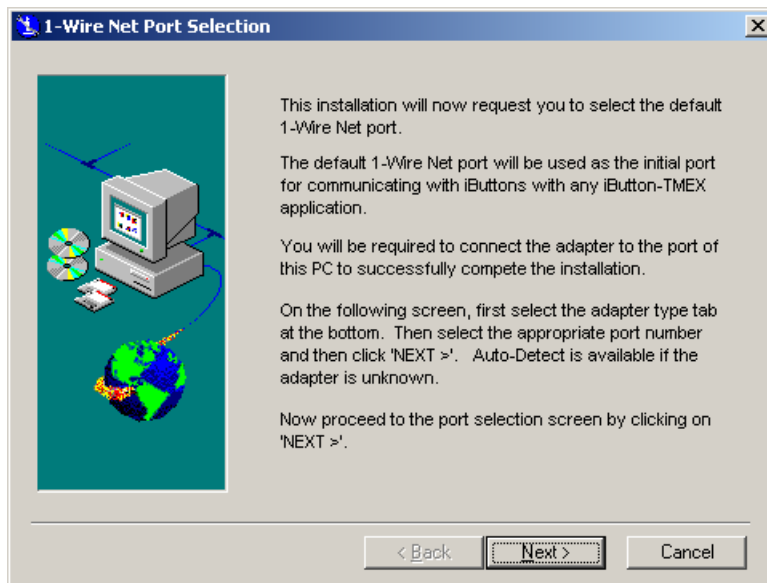
The following window appears. Click on the "Next" button.



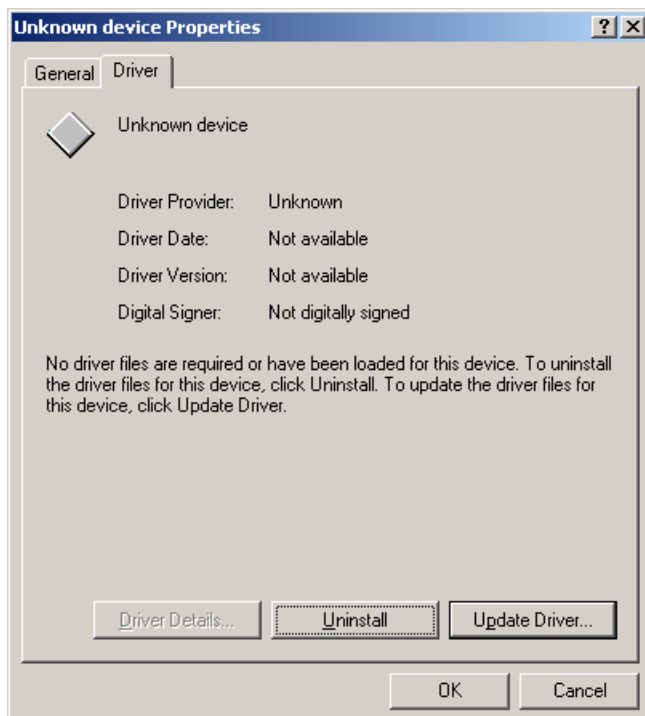
After a while, the following window appears. Click on the "OK" button.



After a while, the “1-Wire Net Port Selection” window appears. Keep this window without clicking on the "Next" button. (You will click on the “Next” button later.)



Open the property of the “Unknown device” under the “Other devices” of Device Manager. Click on the “Driver” tab and click on the “Update Driver...” button.



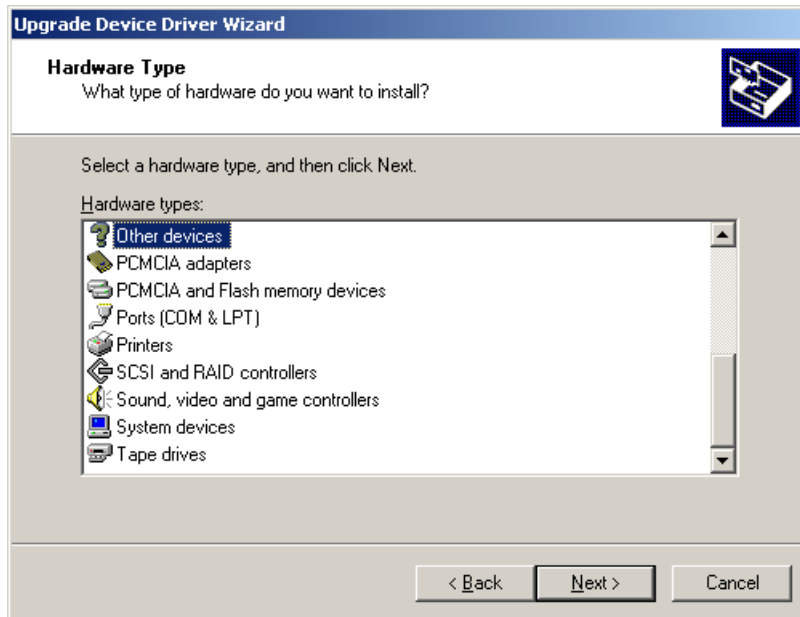
The following window appears. Click on the “Next” button.



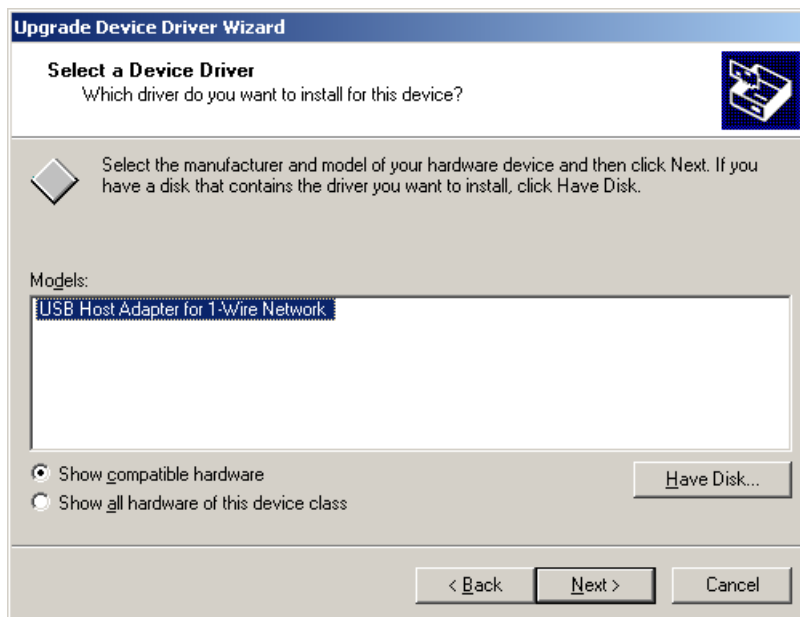
The following window appears. Check the “Display a list of the known drivers for this device so that I can choose a specific driver” radio button, then click on the “Next” button.



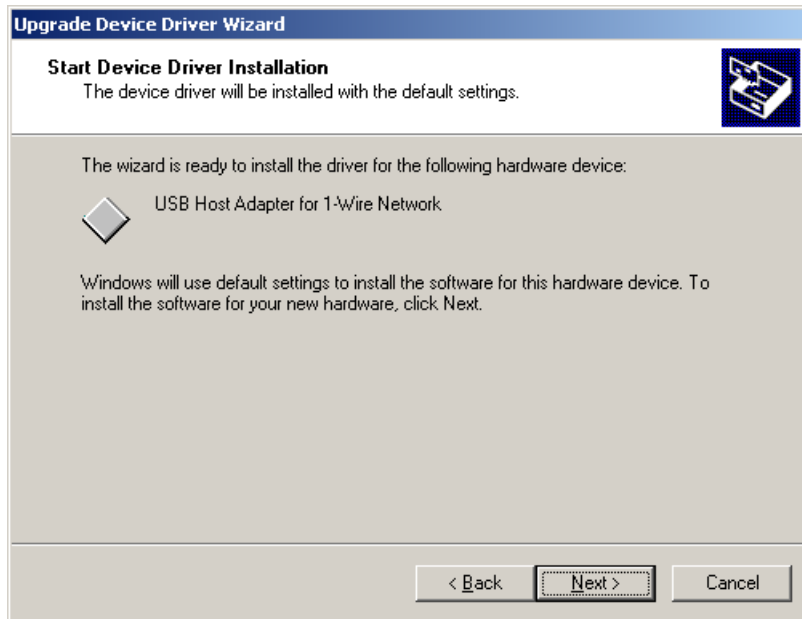
The following window appears. Click on “Other devices”, then click on the “Next” button.



The following window appears. Click on “USB Host Adapter for 1-Wire Network”, then click on the “Next” button



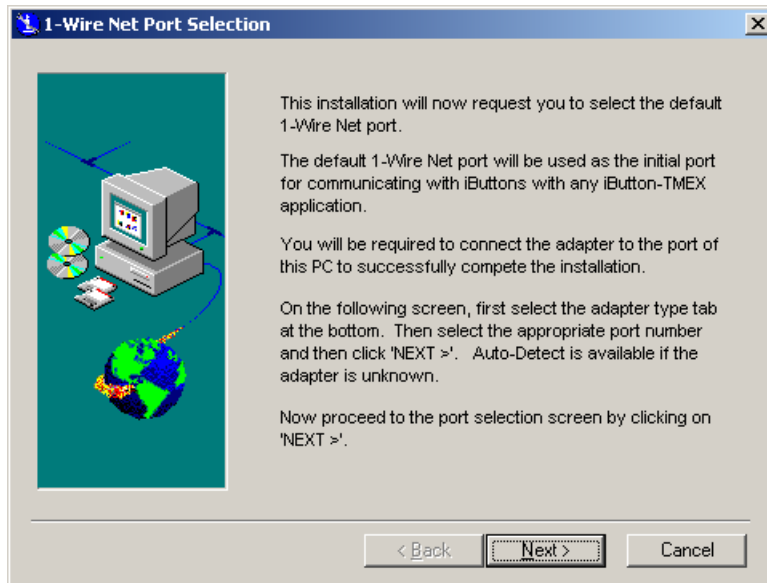
The following window appears. Click on the “Next” button.



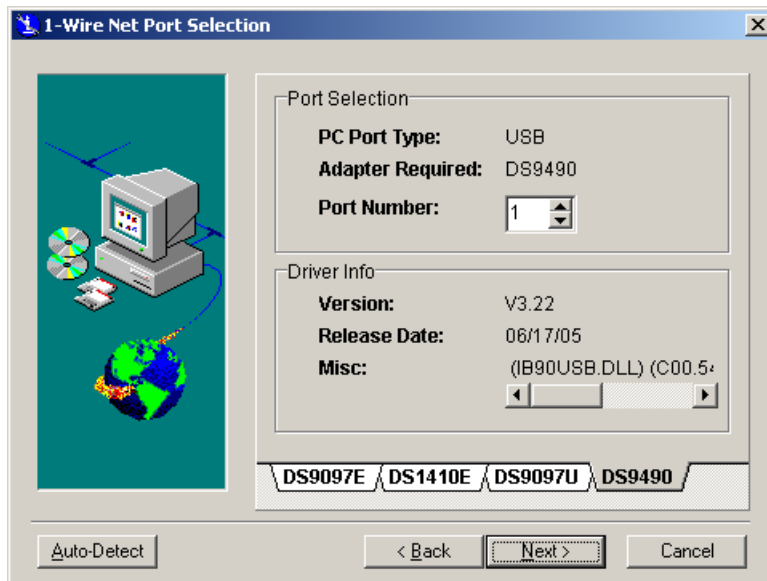
After completion of the upgrade, the following window appears. Click on the “Finish” button to complete the update process.



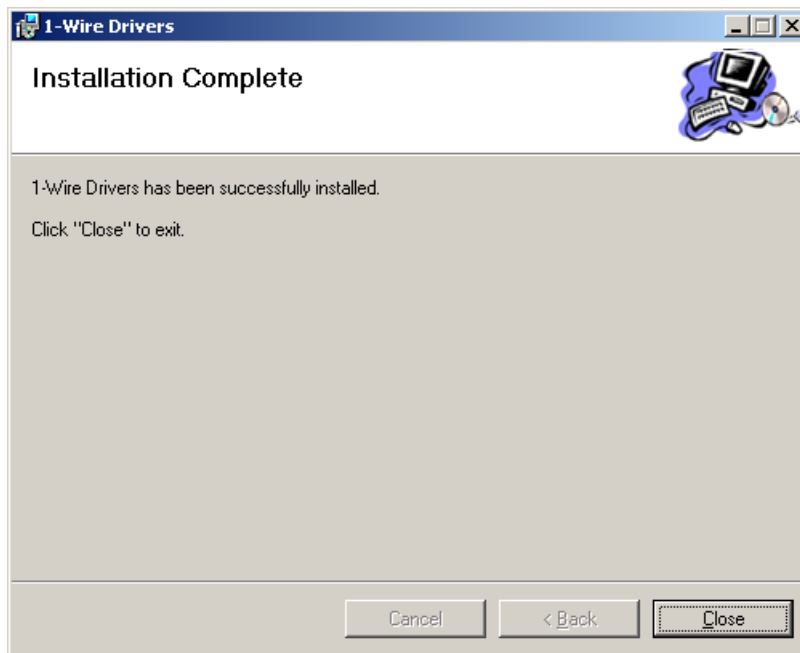
Back to the “1-Wire Net Port Selection” window, and click on the “Next” button.



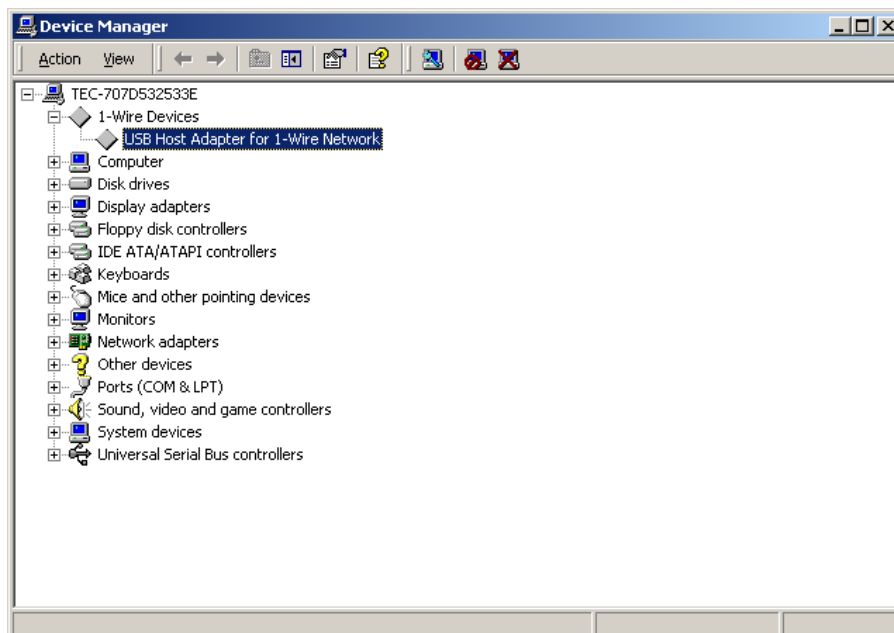
The following window appears. Click on the “Next” button.



When the following window appears, click on the “Close” button to complete the installation.



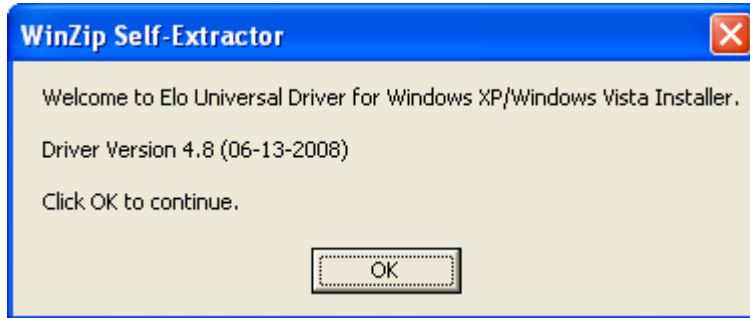
Open Device Manager to confirm the iButton has been installed. Make sure that “USB Host Adapter for 1-Wire Network” is registered under the “1-WireDevices” icon.



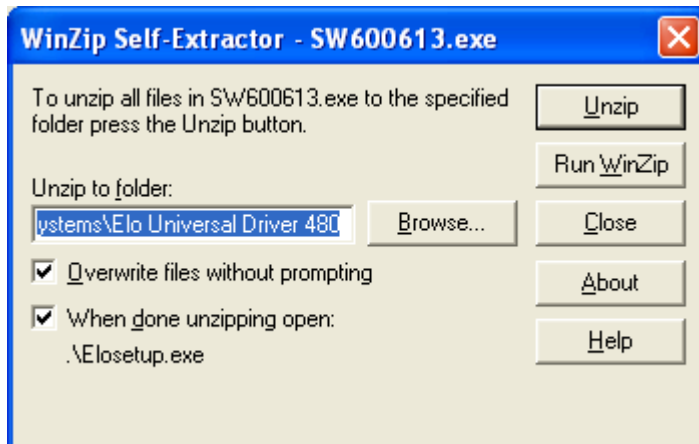
3. Set up for Windows XP (or WEPOS, POSReady 2009)

3.1. Installation of Elo Touch Panel Driver

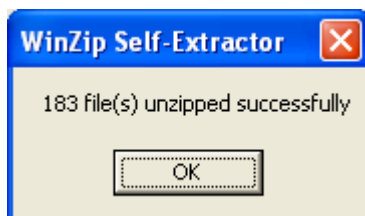
Run "SW600650.exe" in the "ST-B20¥Display¥TFTST-B20¥ELOTouchPanel¥XP_WEPOS_POSReady_Vista" folder in the Driver Kit CD-ROM, and the following window appears. Click on the "OK" button.



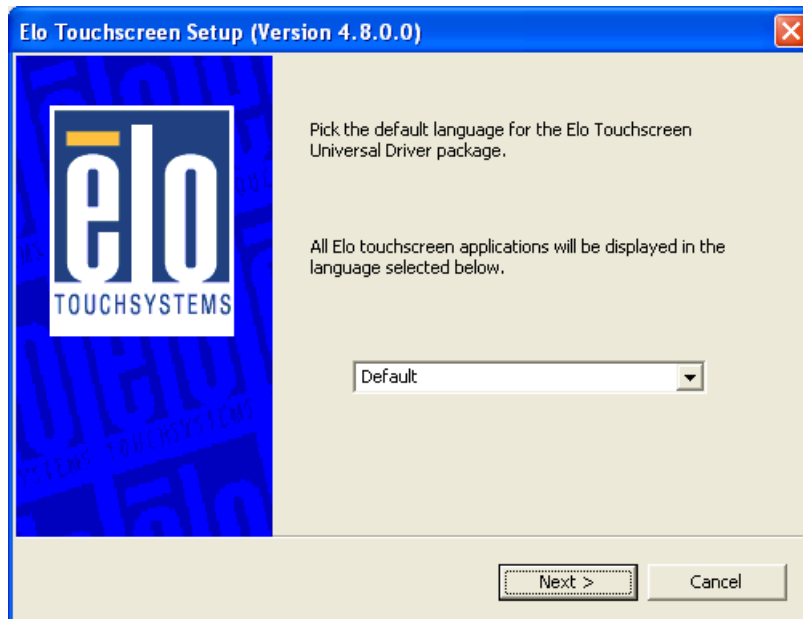
The following window appears. Click on the "Unzip" button, then the files are decompressed.



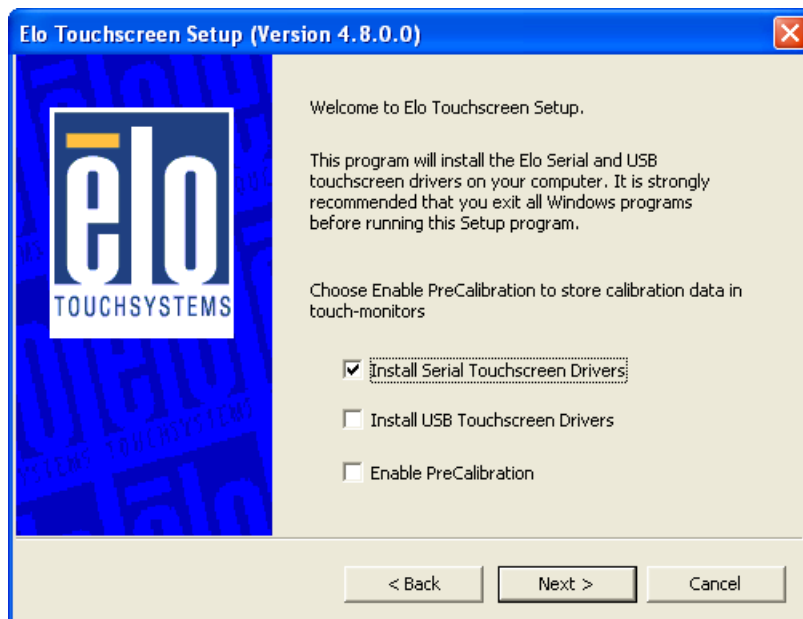
The following window appears. Click on the "OK" button.



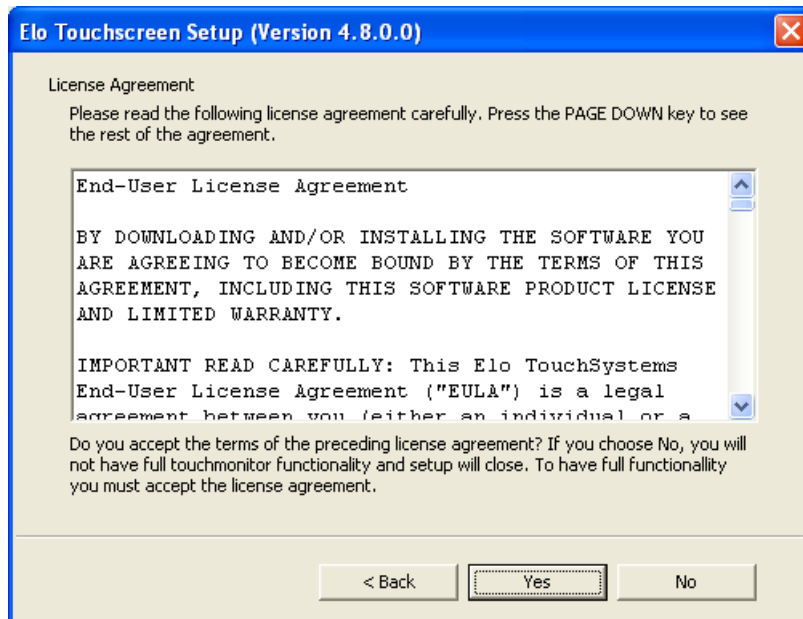
The following window appears. Choose a language, if necessary, and then click on the “Next” button.



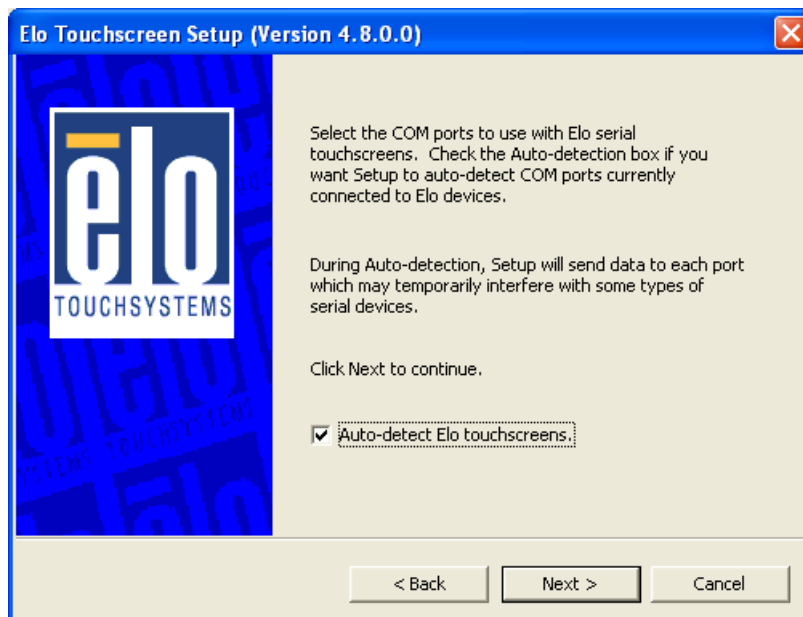
The following window appears. Check the “Install Serial Touchscreen Drivers” check box, and click on the “Next” button.



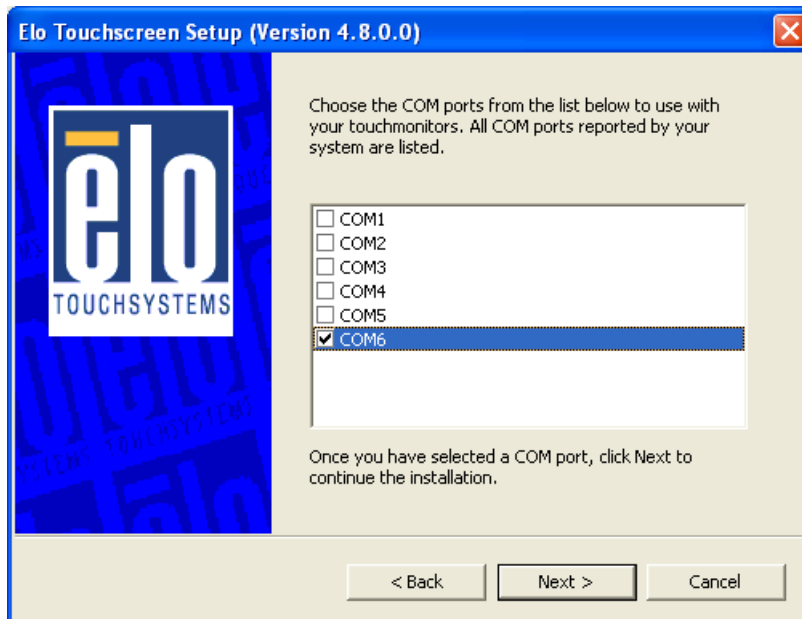
The “License Agreement” window appears. Confirm the contents. If you agree, click on the “Yes” button.



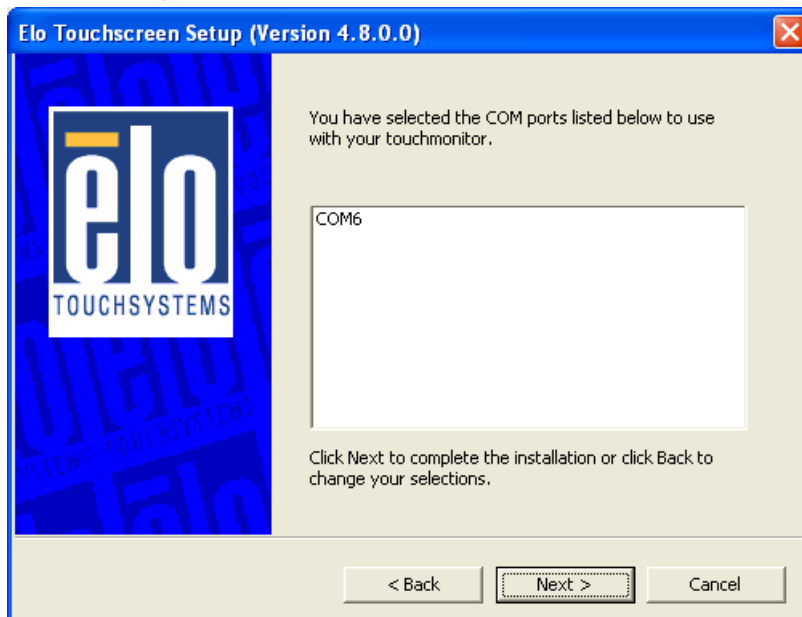
The following window appears. Check the “Auto-detect Elo devices” check box, then click on the “Next” button.



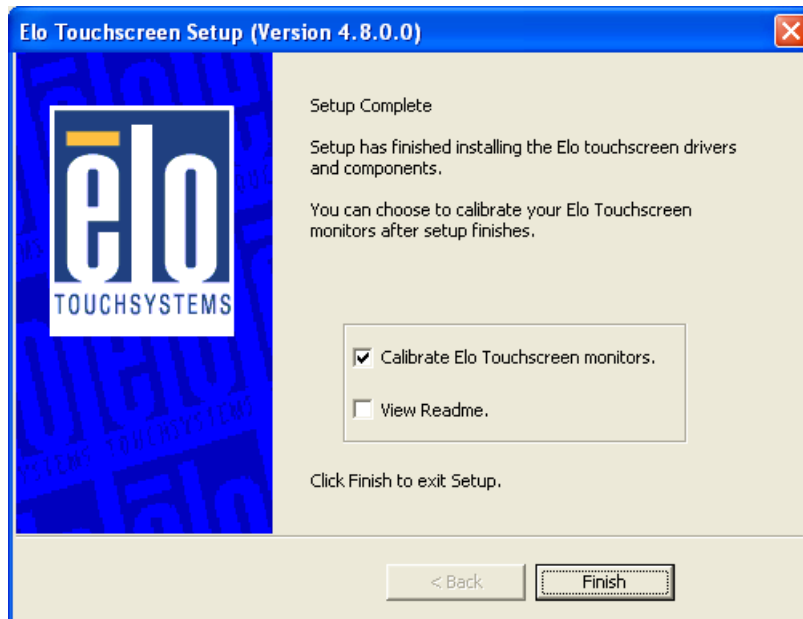
The following window appears. The touch panel connected to the ST-B20 is detected, and “COMx” is chosen. If “COMx” is not chosen, there may be a problem. Click on the “Next” button.



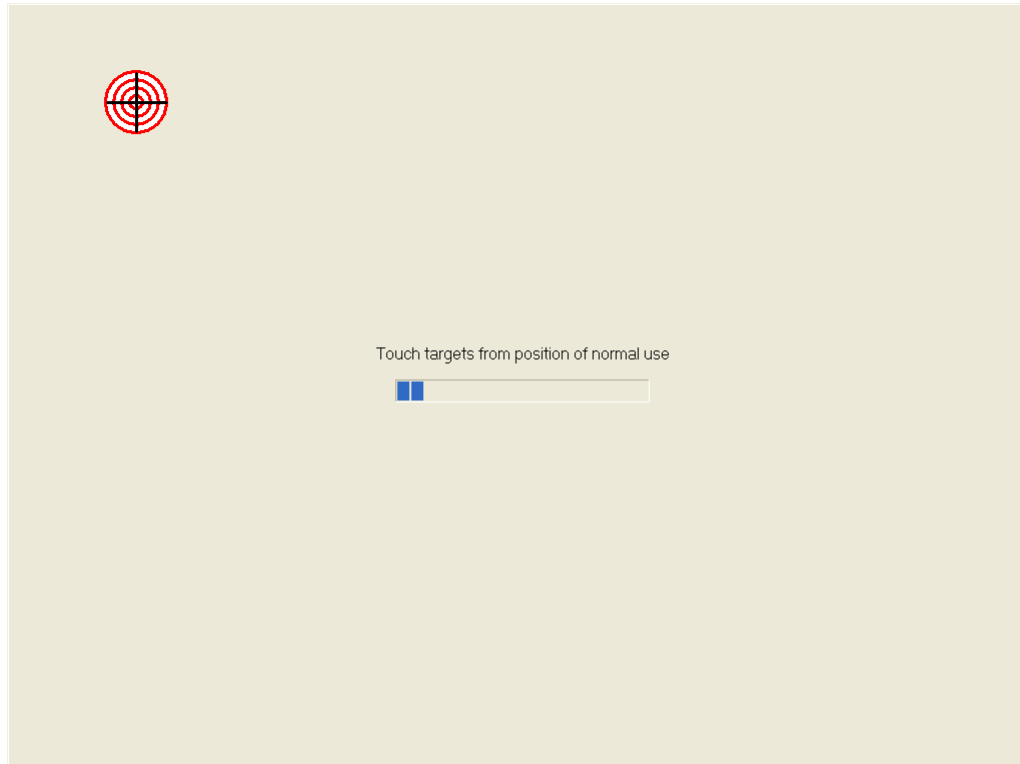
The following window appears. Click on the “Next” button.



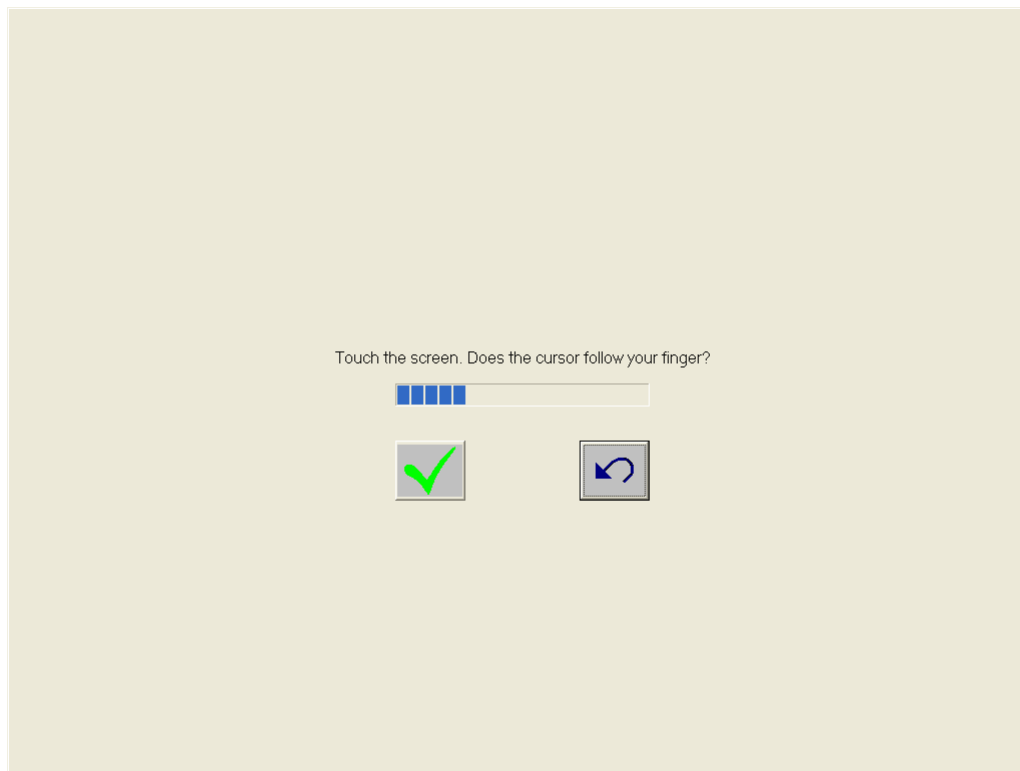
After completion of the installation, the following window appears. Check the “Calibrate Elo Touchscreen monitors” check box, and click on the “Finish” button.



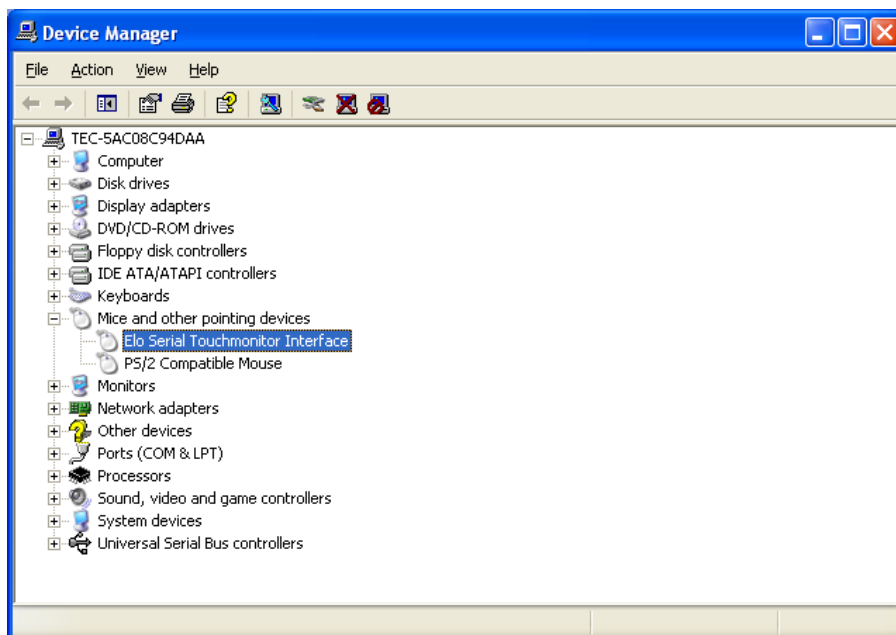
The following calibration screen appears. Perform a calibration by touching the mark whenever it appears. (The mark appears three times.)



After the mark was touched three times, two buttons appear at the center of the screen. Click on the check mark button to complete the calibration

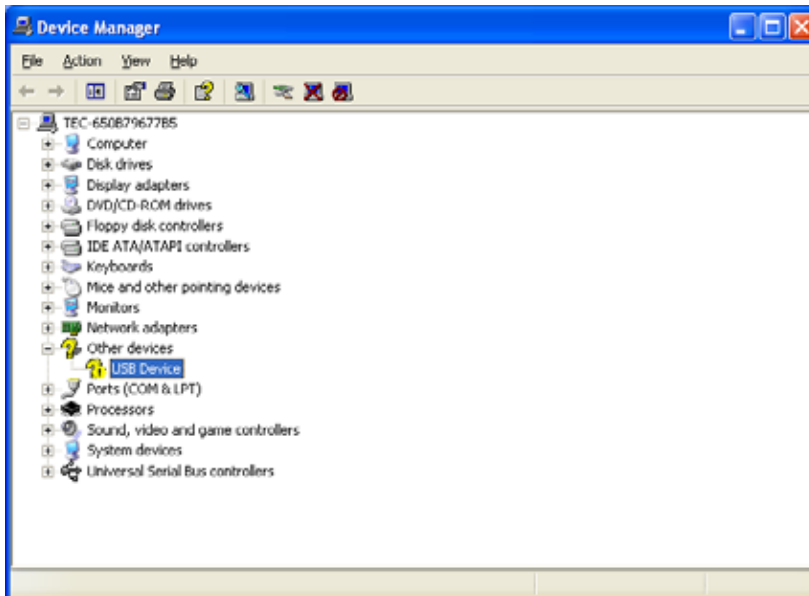


Open Device Manager to confirm the touch panel driver has been installed. Make sure that “Elo Serial Touchmonitor Interface” is registered under the “Mice and other pointing devices” icon.



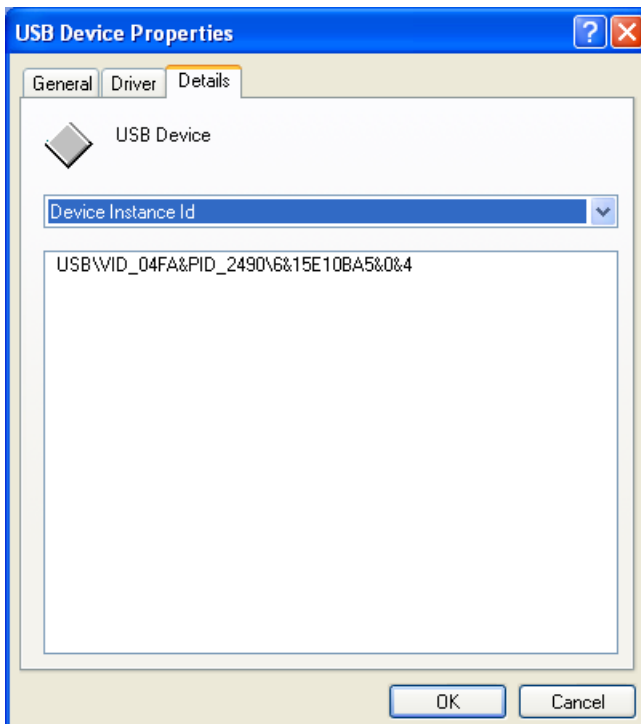
3.2. Installation of i-Button Driver

When the iButton is connected to the ST-B20, "USB Device" is shown with an exclamation mark (!) under the "Other devices" icon in the Device Manager window.



Note: A confirmation of iButton device

Open the property of the "USB device" under the "Other devices" of Device Manager. Click on the "Details" tab, and confirm that there is "USB\VID_04FA&xxxxxxx".



We can not redistribute this installation driver.

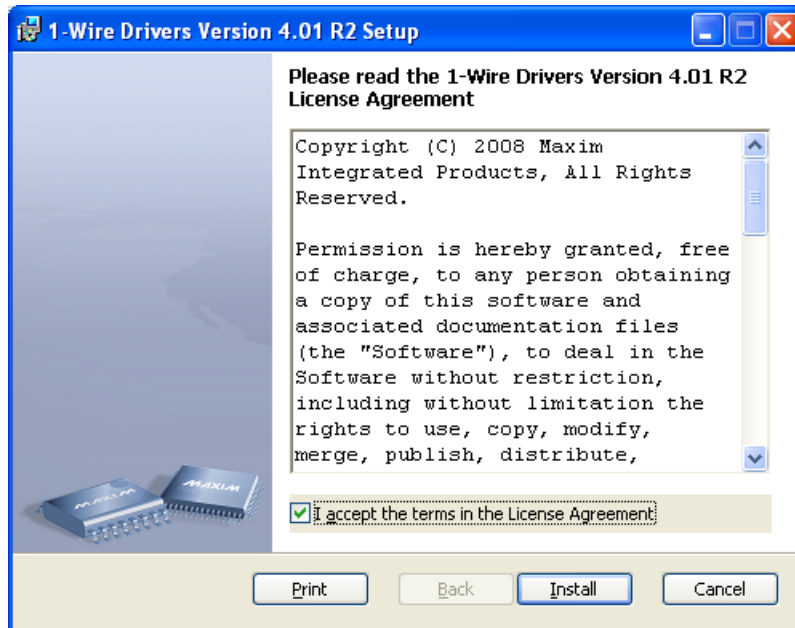
Therefore, if you need the driver, you have to download the driver from following site.

<http://www.maxim-ic.com/products/ibutton/software/tmex/>

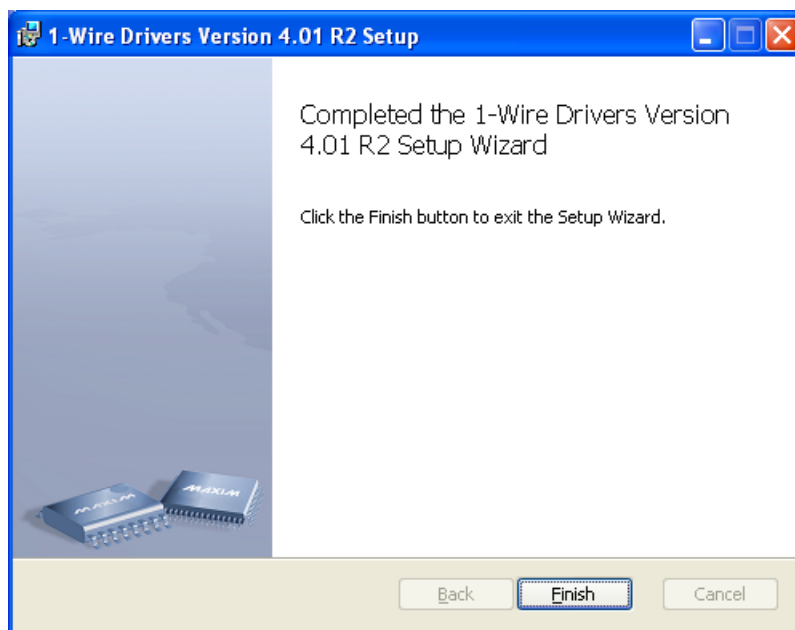
Note: This URL was written on 2008/7/30.

Run the “install_1_wire_drivers_x86_v401r2.msi” which you downloaded.

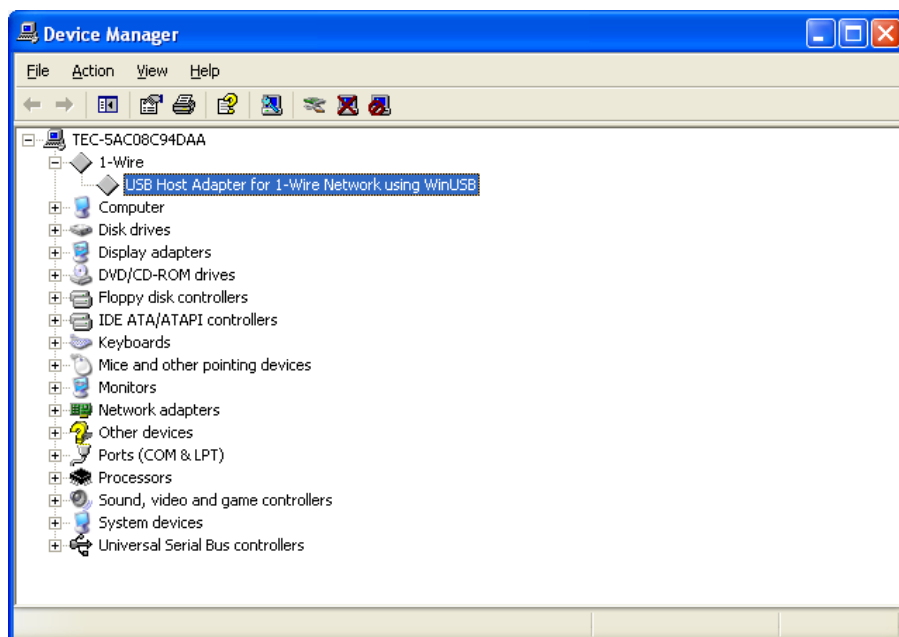
The “License Agreement” window appears. Confirm the contents. If you agree, check the “I accept the terms in the License Agreement” check box and click on the “Install” button.



After completion of the installation, the following window appears. Click on the “Finish” button.



Open Device Manager to confirm the iButton has been installed. Make sure that “USB Host Adapter for 1-Wire Network using WinUSB” is registered under the “1-Wire” icon.

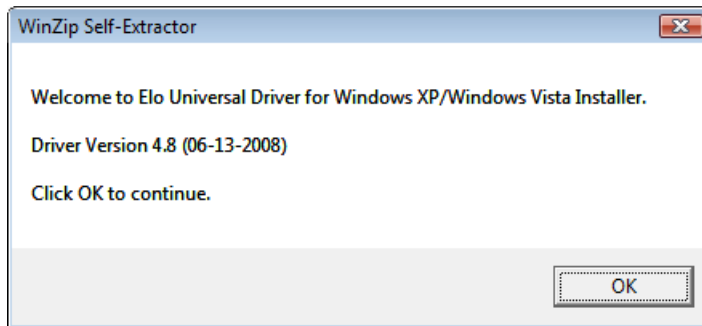


4. Setup for Windows Vista Business

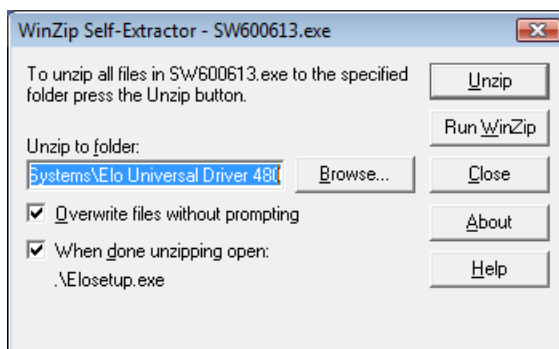
4.1. Installation of Elo Touch Panel Driver

Open the “ST-B20¥Display¥TFTST-B20¥ELOTouchPanel¥XP_WEPOS_POSReady_Vista” folder in the Driver Kit CD-ROM. Right-click on the “SW600650.exe” icon, and select “Run as administrator” menu. The following window appears. Click on the “OK” button.

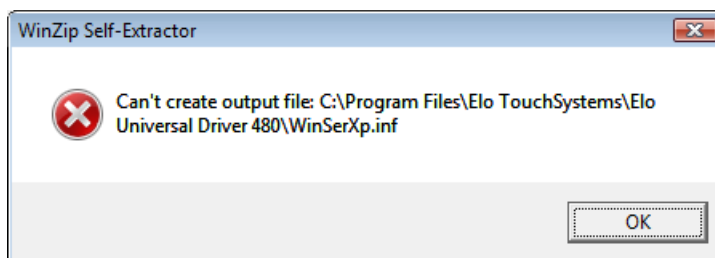
Note: If you forget it, the installation does not be completed.



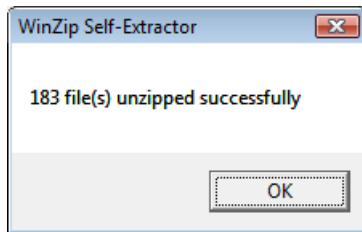
The following window appears. Click on the “Unzip” button, then the files are decompressed.



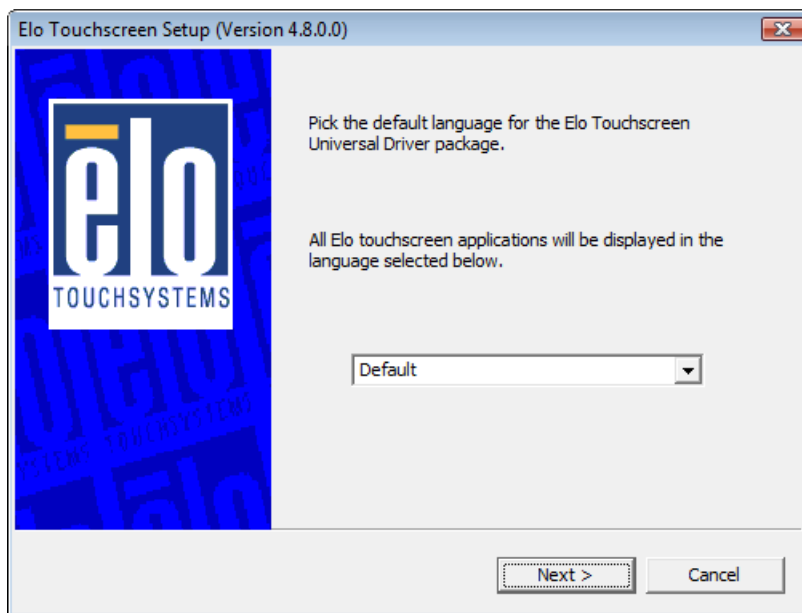
Note: If you forget to run the installer as an administrator, writing to the system area is limited and the installation fails. Then, the following window appears.



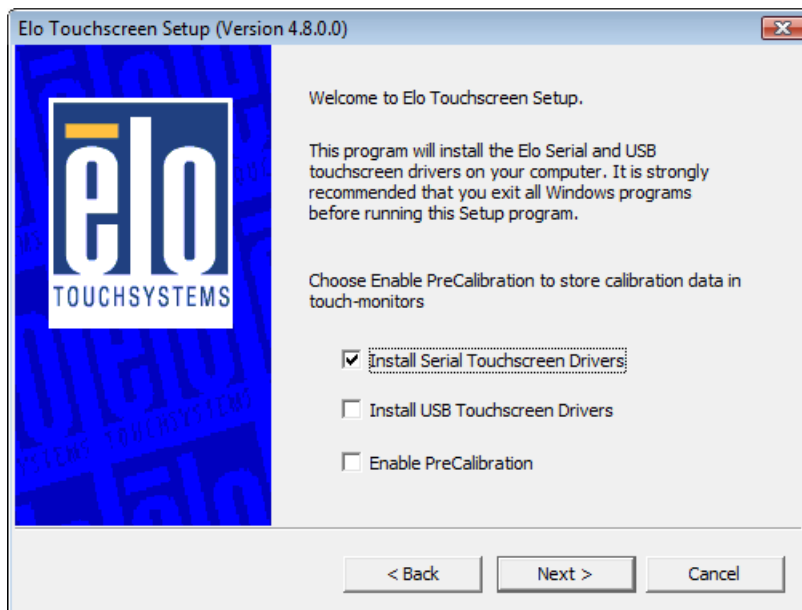
The following window appears. Click on the “OK” button.



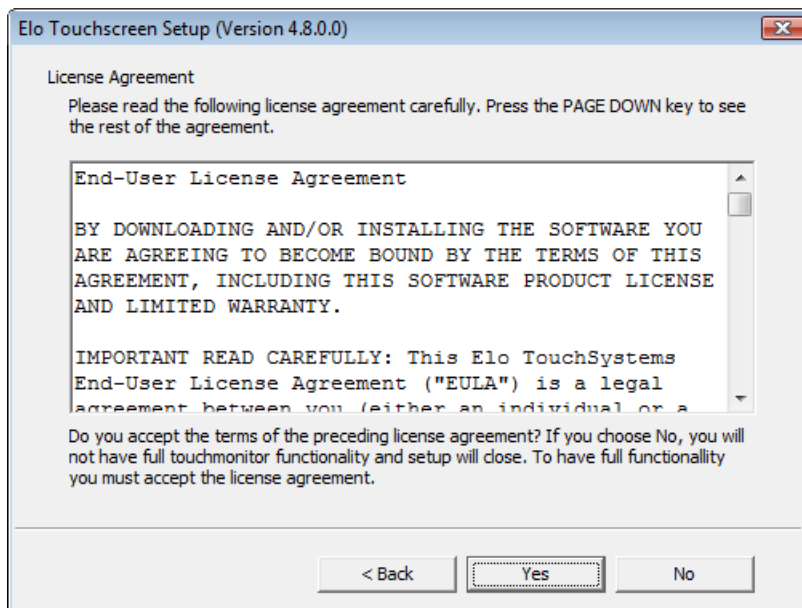
The following window appears. Choose a language, if necessary, and then click on the “Next” button.



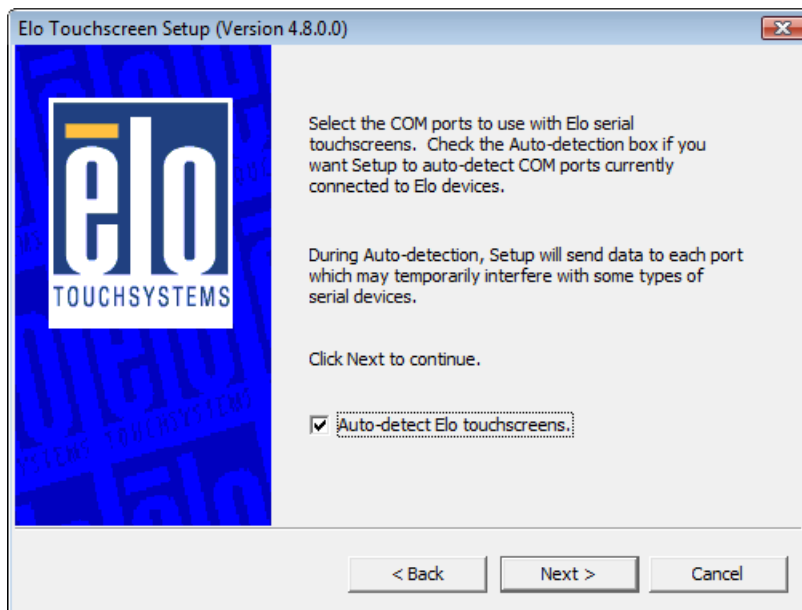
The following window appears. Check the “Install Serial Touchscreen Drivers” check box, and click on the “Next” button.



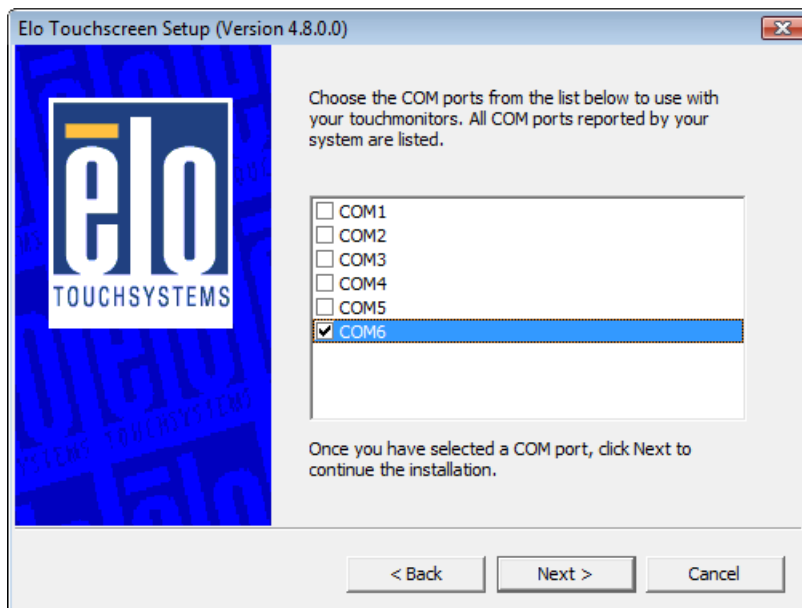
The “License Agreement” window appears. Confirm the contents. If you agree, click on the “Yes” button.



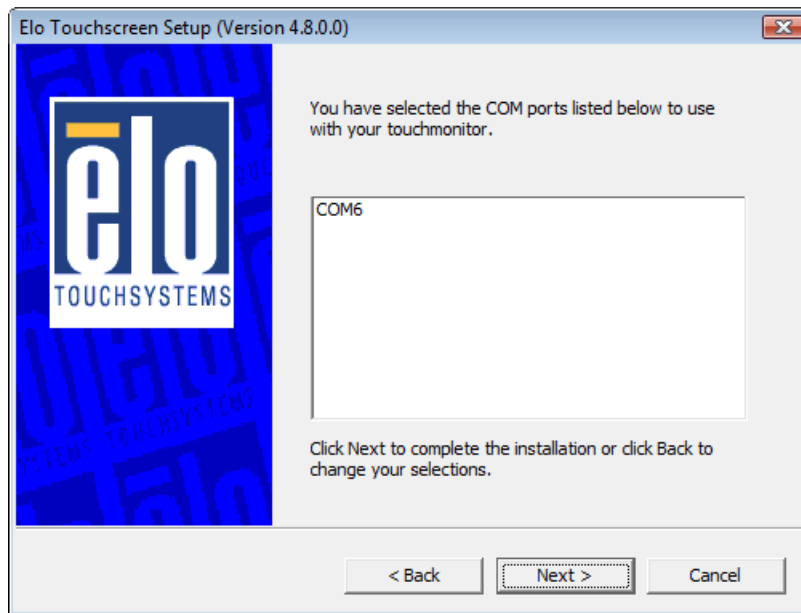
The following window appears. Check the “Auto-detect Elo devices” check box, and click on the “Next” button.



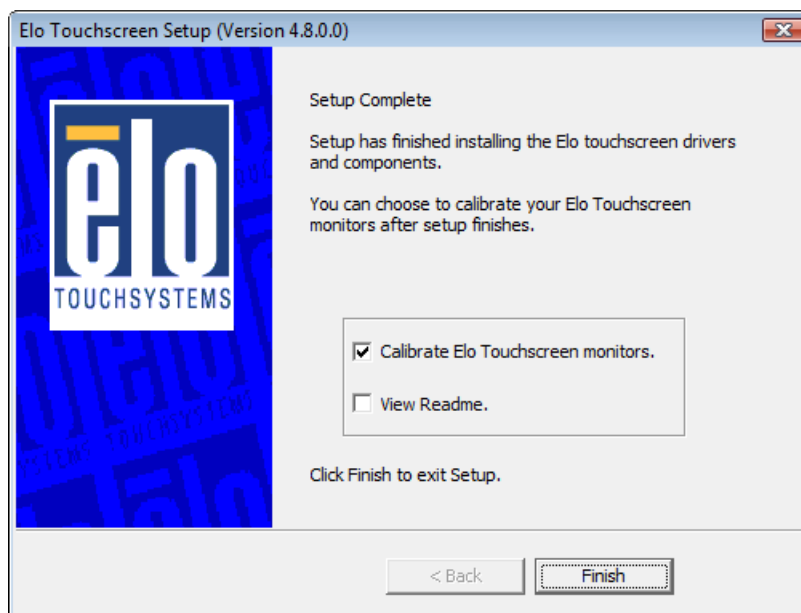
The following window appears. The touch panel connected to the ST-B20 is detected, and “COMx” is chosen. If “COMx” is not chosen, there may be a problem. Click on the “Next” button.



The following window appears. Click on the “Next” button.



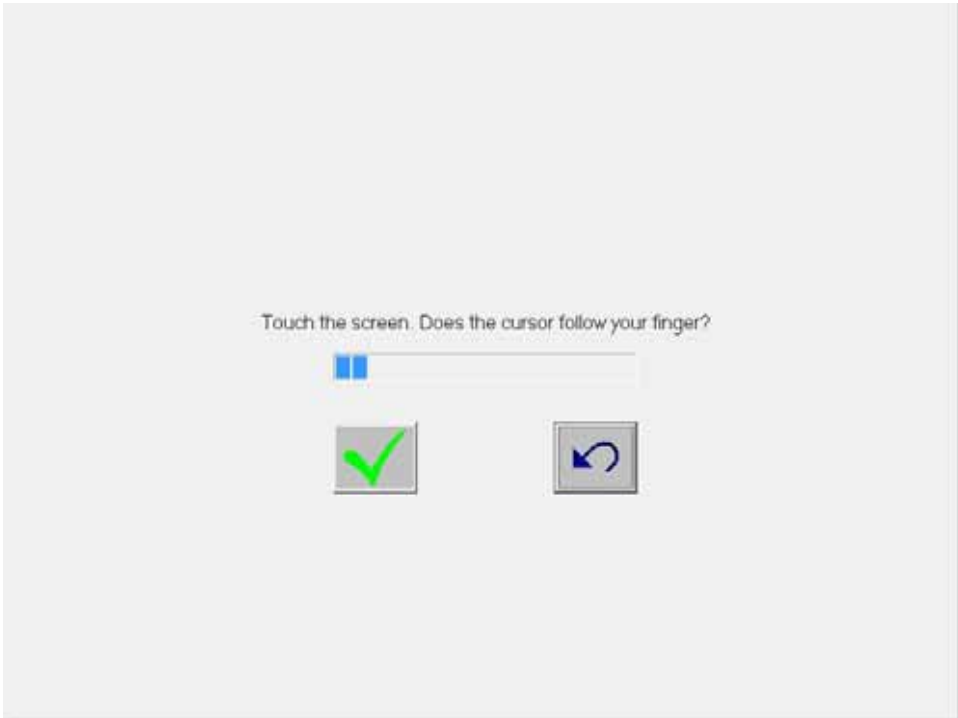
After completion of the installation, the following window appears. Check the “Calibrate Elo Touchscreen monitors” check box, and click on the “Finish” button.



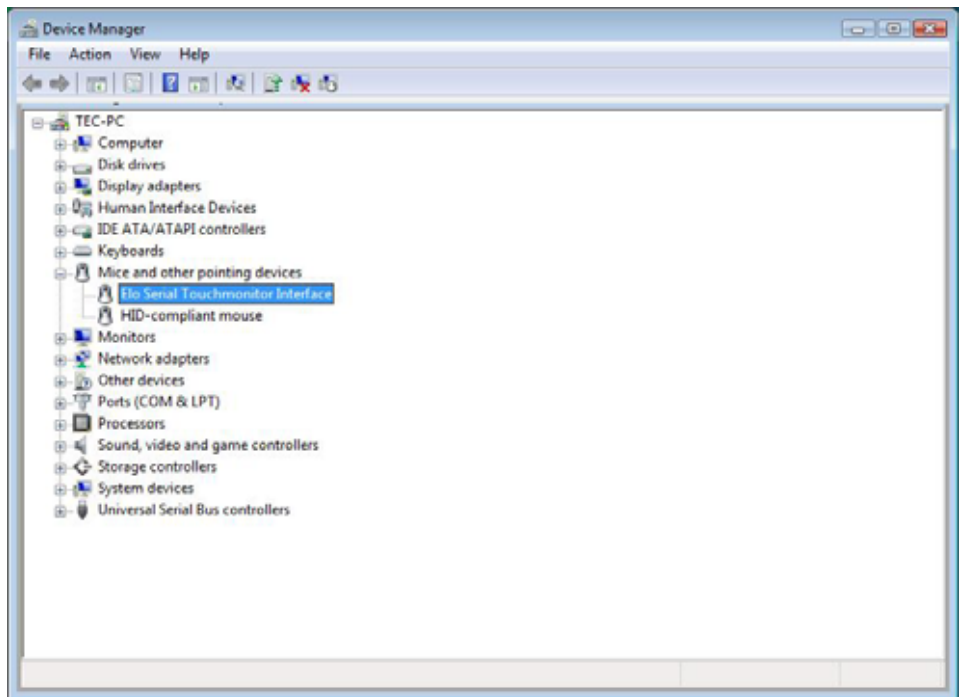
The following calibration screen appears. Perform a calibration by touching the mark whenever it appears. (The mark appears three times.)



After the mark was touched three times, two buttons appear at the center of the screen. Click on the check mark button to complete the calibration

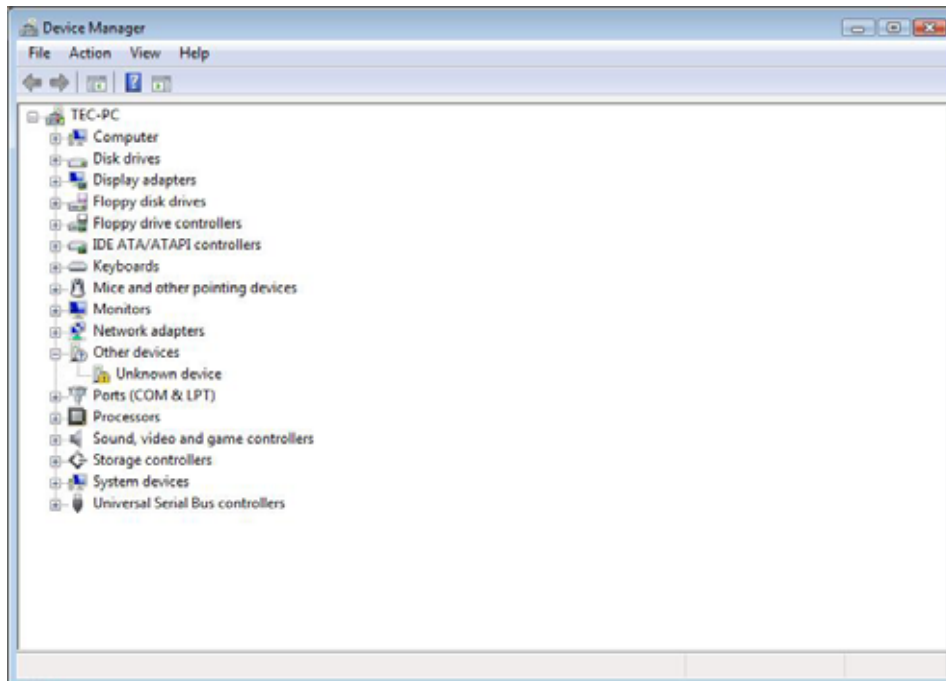


Open Device Manager to confirm the touch panel driver has been installed. Make sure that “Elo Serial Touchmonitor Interface” is registered under the “Mice and other pointing devices” icon.



4.2. Installation of i-Button Driver

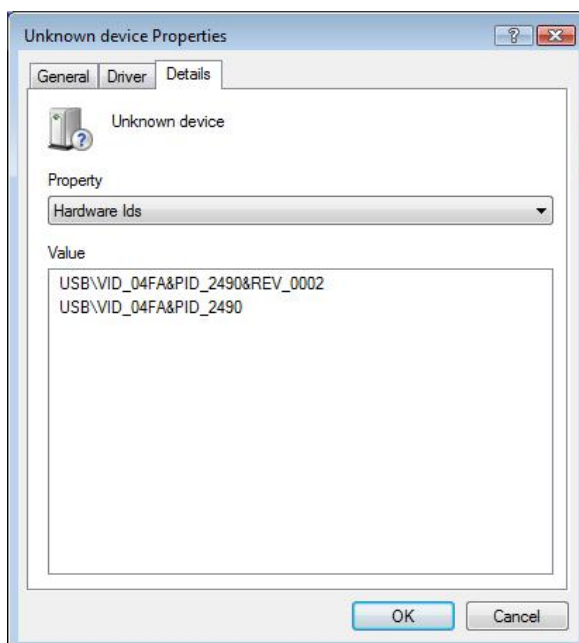
When the iButton is connected to the ST-B20, "Unknown Device" is shown with an exclamationmark (!) under the "Other devices" icon in the Device Manager window.



Note: A confirmation of iButton device

Open the property of the "Unknown device" under the "Other devices" of Device Manager.

Click on the "Details" tab, and confirm that there is "USB\VID_04FA&xxxxxx".



We can not redistribute this installation driver.

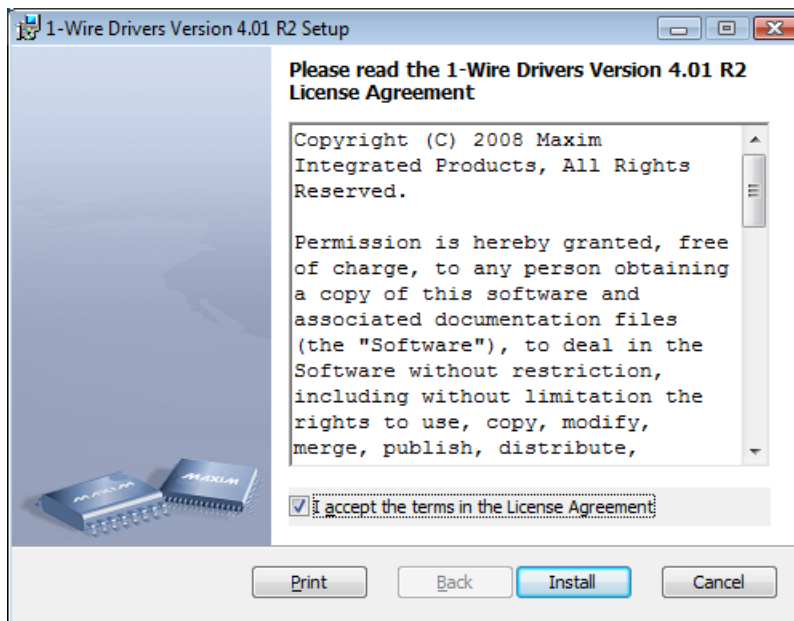
Therefore, if you need the driver, you have to download the driver from following site.

<http://www.maxim-ic.com/products/ibutton/software/tmex/>

Note: This URL was written on 2008/7/30.

Run the "install_1_wire_drivers_x86_v401r2.msi" which you downloaded.

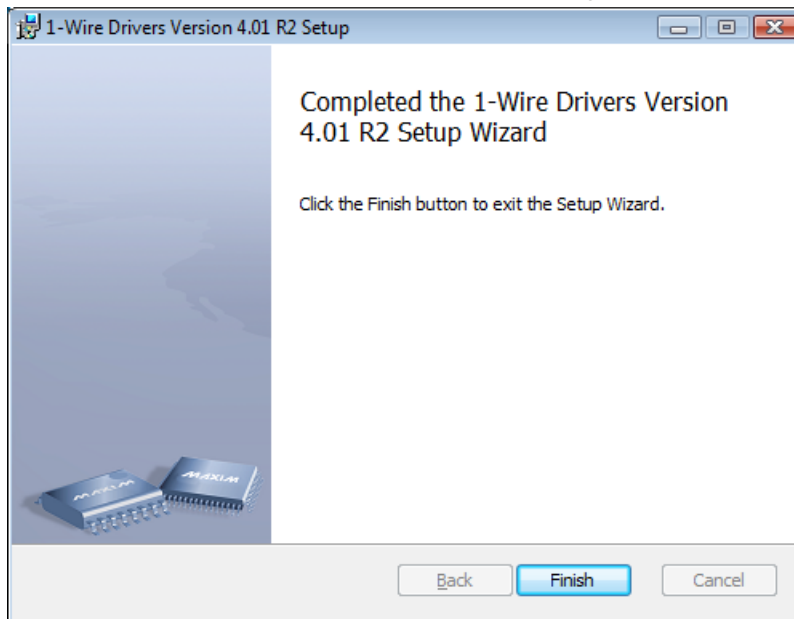
After a while, the "License Agreement" window appears. Confirm the contents. If you agree, check the "I accept the terms in the License Agreement" check box and click on the "Install" button.



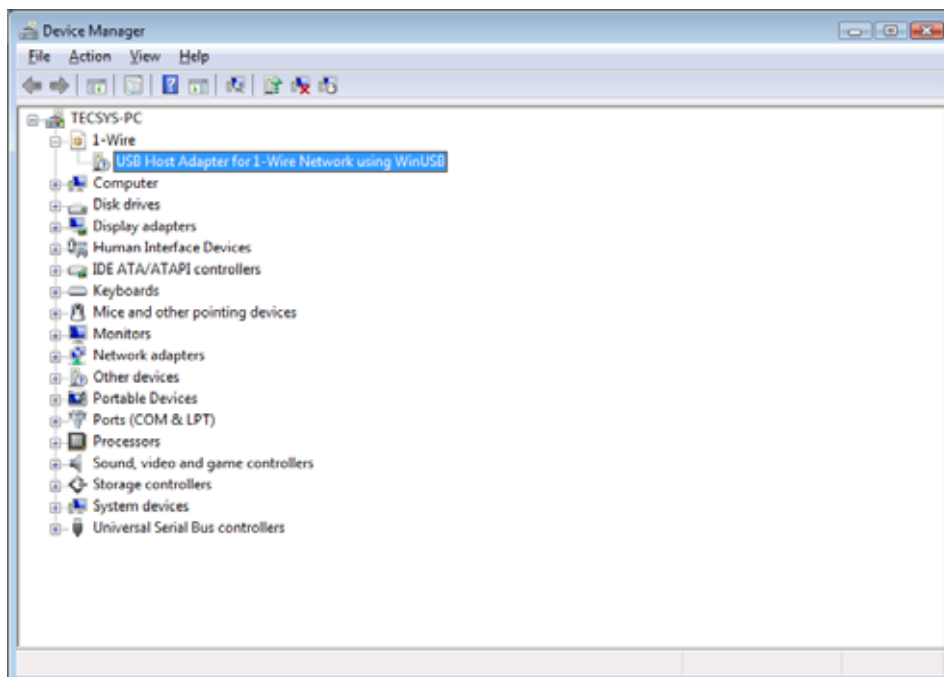
After a while, the following window appears. Click on the "Install" button.



After completion of the installation, the following window appears. Click on the “Finish” button.



Open Device Manager to confirm the iButton has been installed. Make sure that “USB Host Adapter for 1-Wire Network using WinUSB” is registered under the “1-Wire” icon.

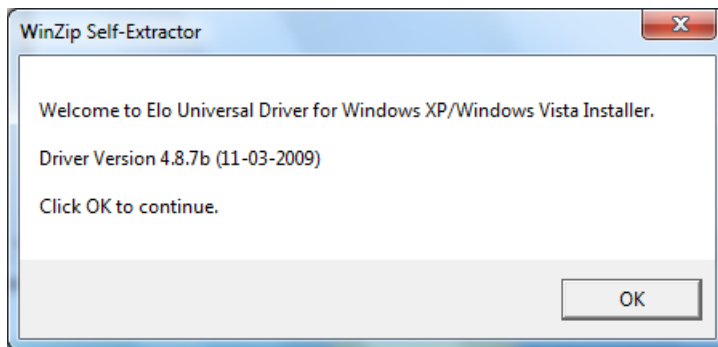


5. Setup for Windows 7 Professional

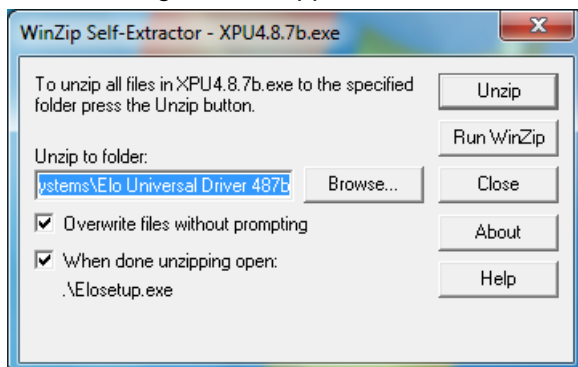
5.1. Installation of Elo Touch Panel Driver

Open the “ST-B20¥Display¥TFTST-B20¥ELOTouchPanel¥7” folder in the Driver Kit CD-ROM. Right-click on the “XPU4.8.7b.exe” icon, and select “Run as administrator” menu. The following window appears. Click on the “OK” button.

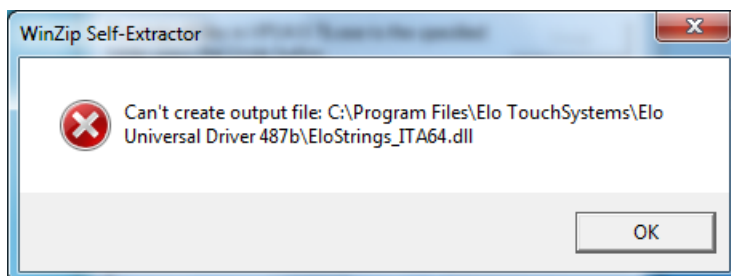
Note: If you forget it, the installation does not be completed.



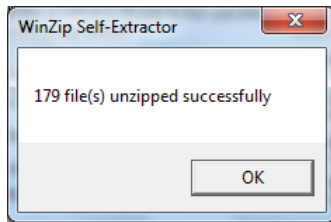
The following window appears. Click on the “Unzip” button, then the files are decompressed.



Note: If you forget to run the installer as an administrator, writing to the system area is limited and the installation fails. Then, the following window appears.



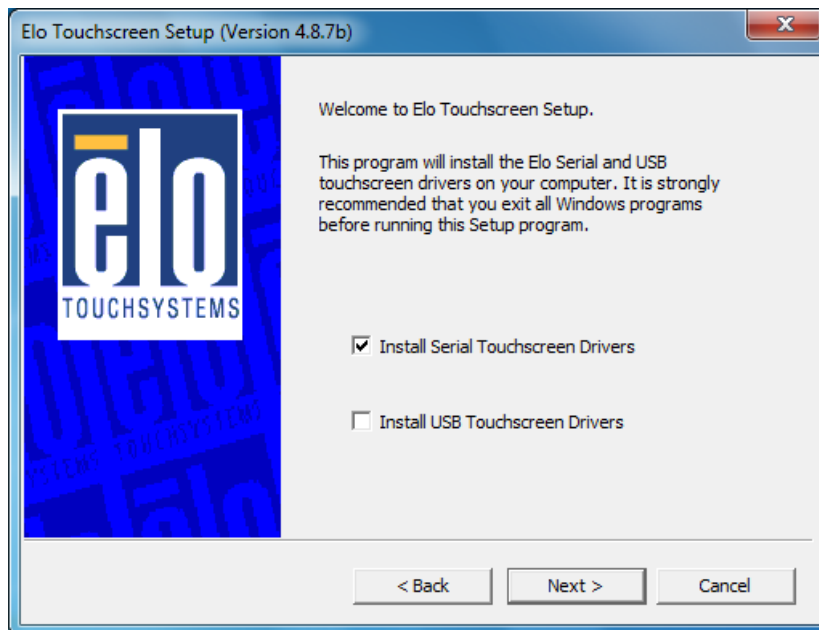
The following window appears. Click on the “OK” button.



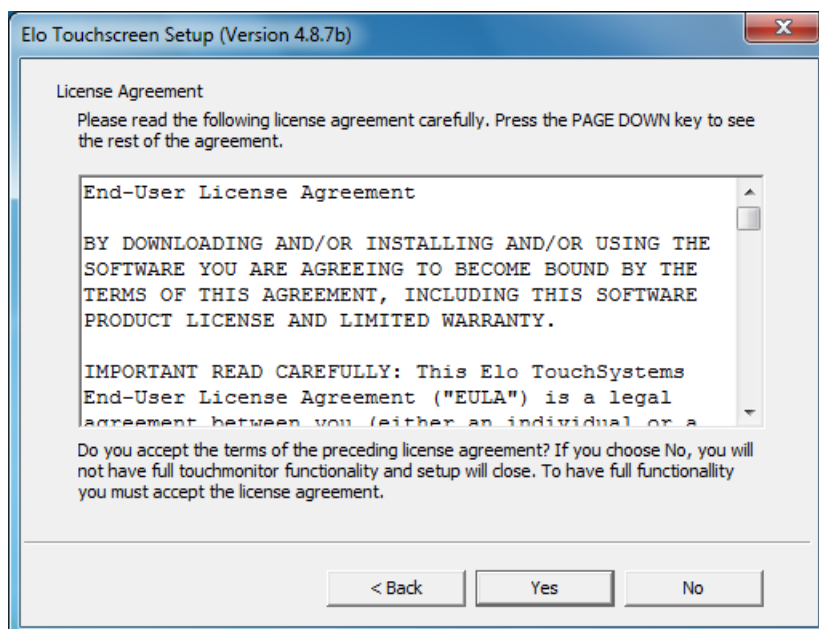
The following window appears. Choose a language, if necessary, and then click on the “Next” button.



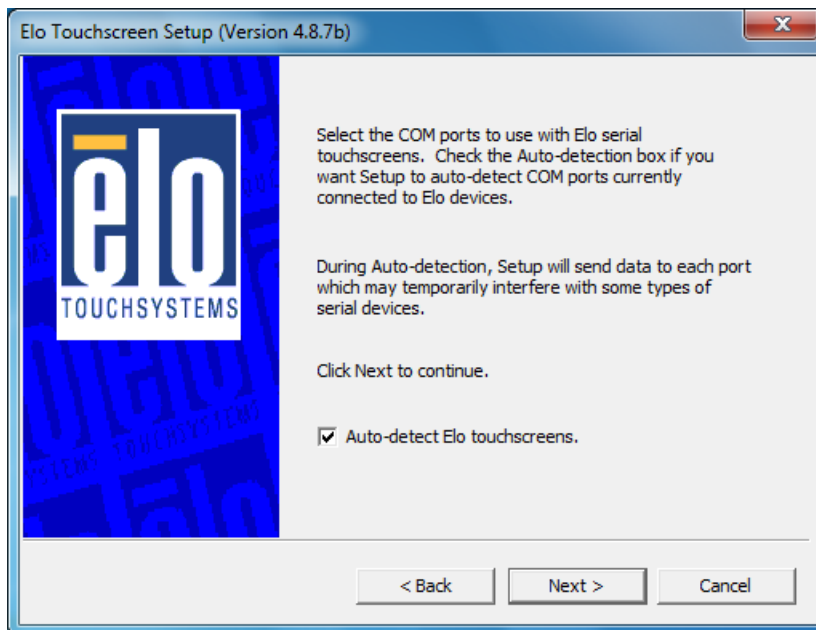
The following window appears. Check the “Install Serial Touchscreen Drivers” check box, and click on the “Next” button.



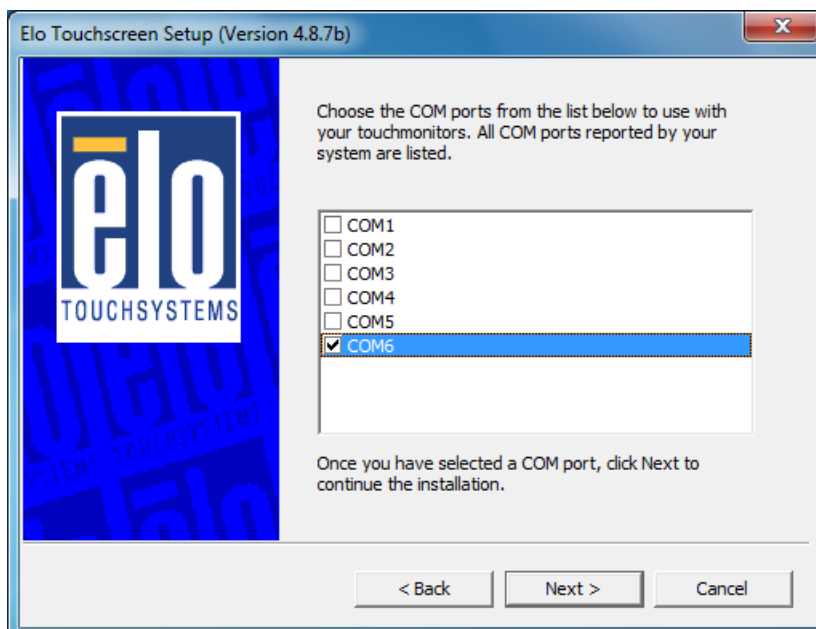
The “License Agreement” window appears. Confirm the contents. If you agree, click on the “Yes” button.



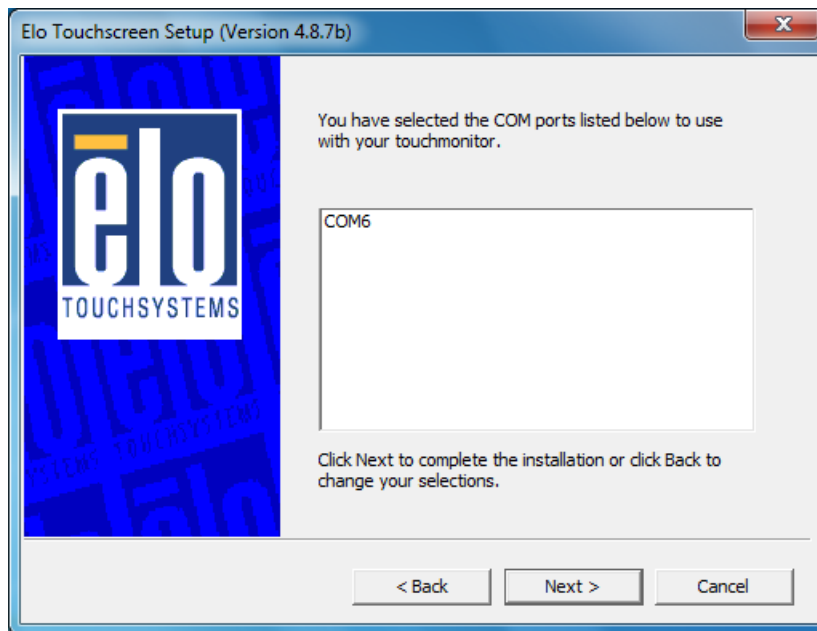
The following window appears. Check the “Auto-detect Elo devices” check box, and click on the “Next” button.



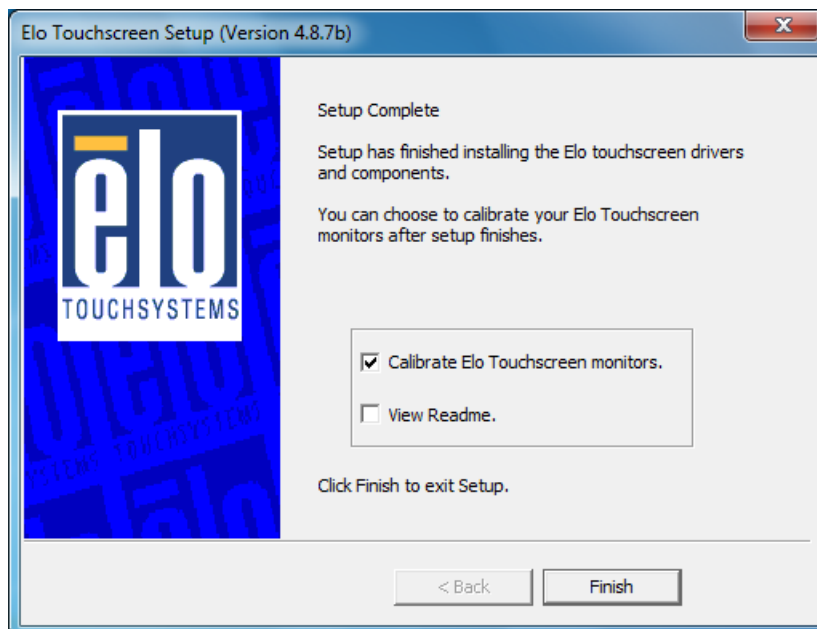
The following window appears. The touch panel connected to the ST-B20 is detected, and “COMx” is chosen. If “COMx” is not chosen, there may be a problem. Click on the “Next” button.



The following window appears. Click on the “Next” button.



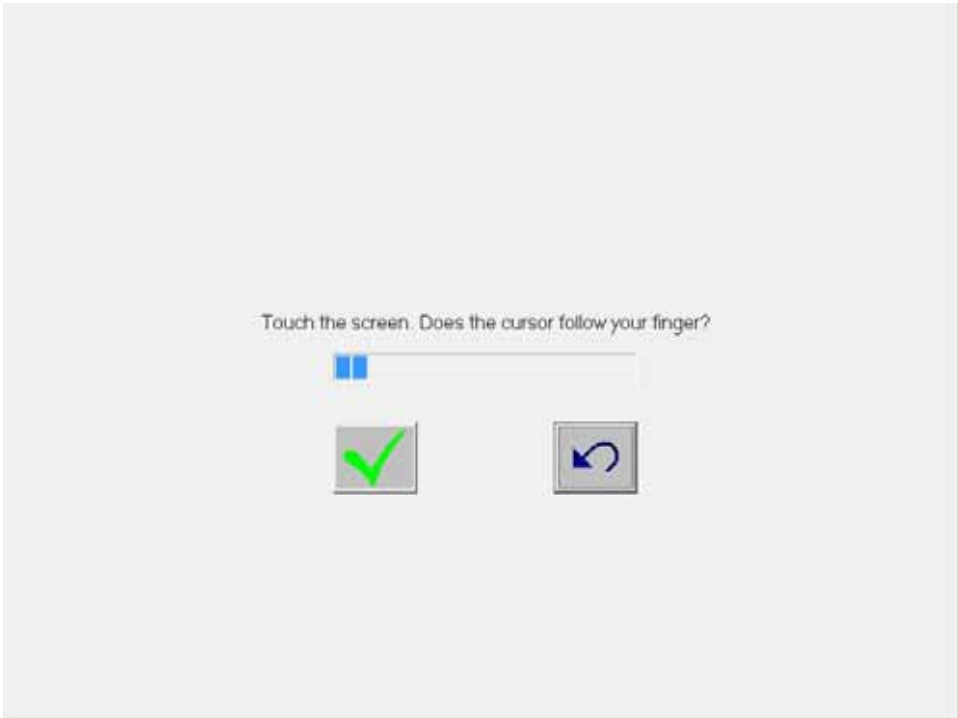
After completion of the installation, the following window appears. Check the “Calibrate Elo Touchscreen monitors” check box, and click on the “Finish” button.



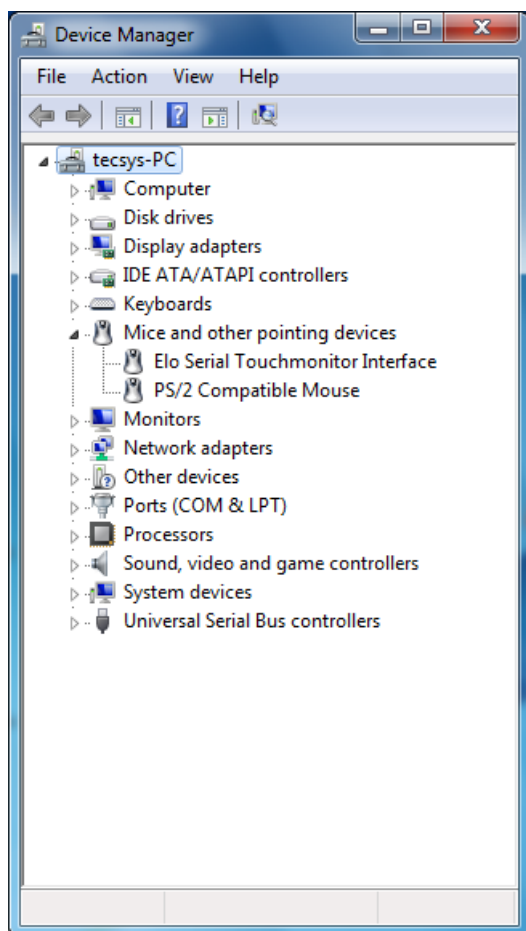
The following calibration screen appears. Perform a calibration by touching the mark whenever it appears. (The mark appears three times.)



After the mark was touched three times, two buttons appear at the center of the screen. Click on the check mark button to complete the calibration

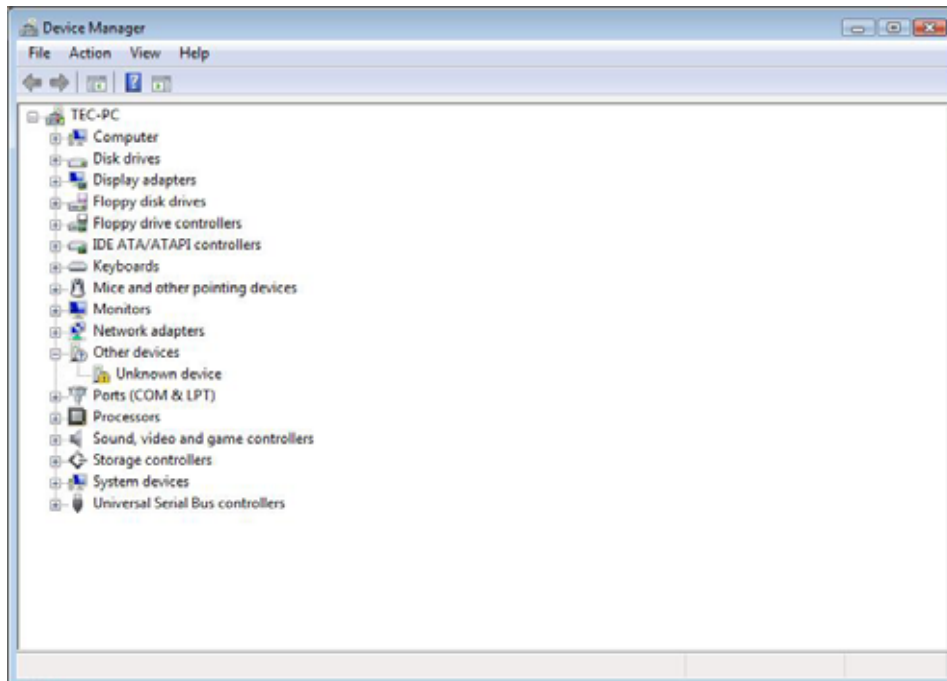


Open Device Manager to confirm the touch panel driver has been installed. Make sure that “Elo Serial Touchmonitor Interface” is registered under the “Mice and other pointing devices” icon.



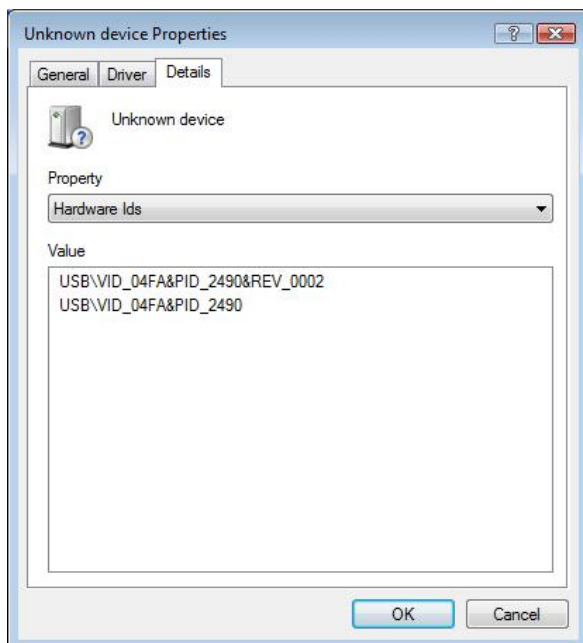
5.2. Installation of i-Button Driver

When the iButton is connected to the ST-B20, "Unknown Device" is shown with an exclamationmark (!) under the "Other devices" icon in the Device Manager window.



Note: A confirmation of iButton device

Open the property of the "Unknown device" under the "Other devices" of Device Manager. Click on the "Details" tab, and confirm that there is "USB\VID_04FA&xxxxxx".



We can not redistribute this installation driver.

Therefore, if you need the driver, you have to download the driver from following site.

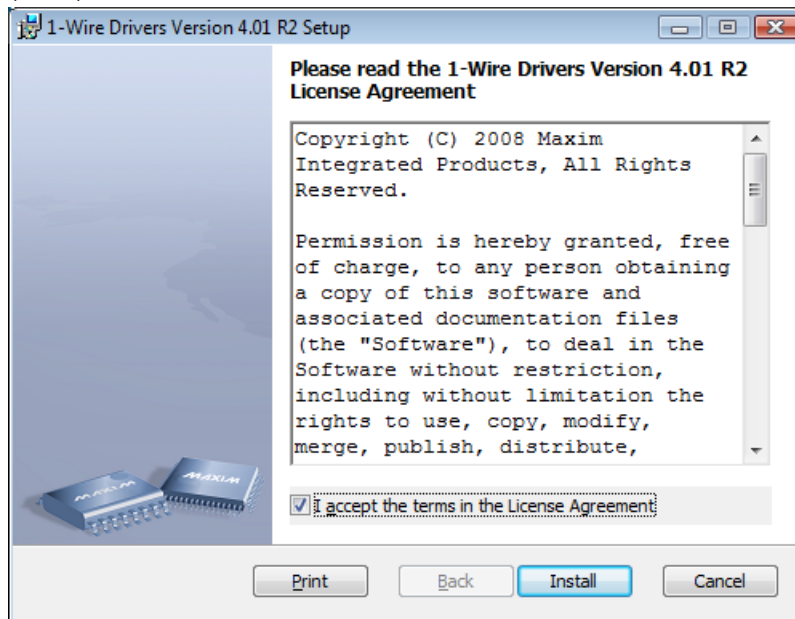
<http://www.maxim-ic.com/products/ibutton/software/tmex/>

Note: This URL was written on 2008/7/30.

Run the "install_1_wire_drivers_x86_v40xxx.msi" which you downloaded.

After a while, the "License Agreement" window appears. Confirm the contents. If you agree, check the "I accept the terms in the License Agreement" check box and click on the "Install" button.

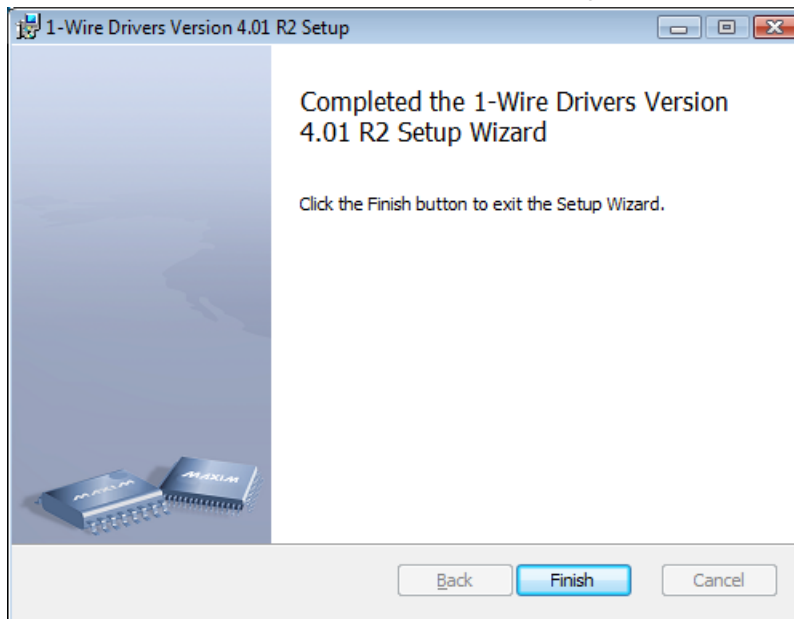
(Note) xxx is the version number of current module on Maxim site.



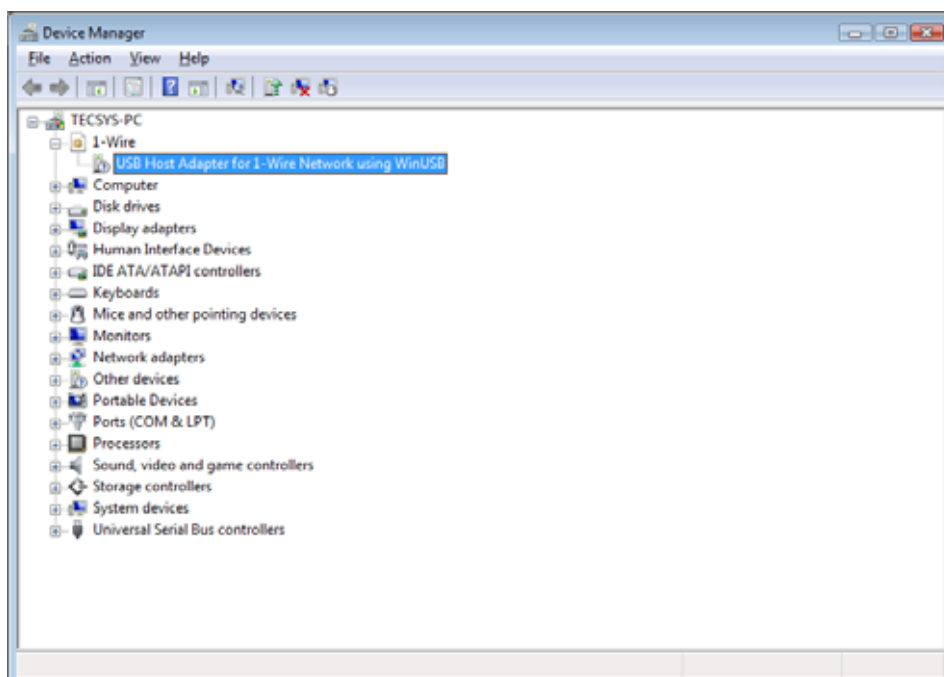
After a while, the following window appears. Click on the "Install" button.



After completion of the installation, the following window appears. Click on the “Finish” button.



Open Device Manager to confirm the iButton has been installed. Make sure that “USB Host Adapter for 1-Wire Network using WinUSB” is registered under the “1-Wire” icon.

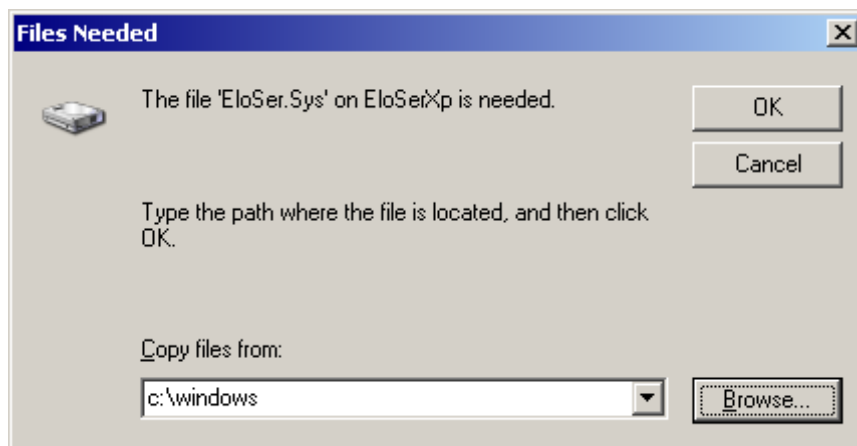


6. Notice and Limitation

6.1. Notice

6.1.1. Notice of touch panel driver installation

If the "Files Needed" window appears during installation, click "Browse" button and select "C:\Program Files\EloTouchSystems" folder. Then click on the "OK" button.



6.1.2. About the necessity of the touch panel reset related to a setting change of the display

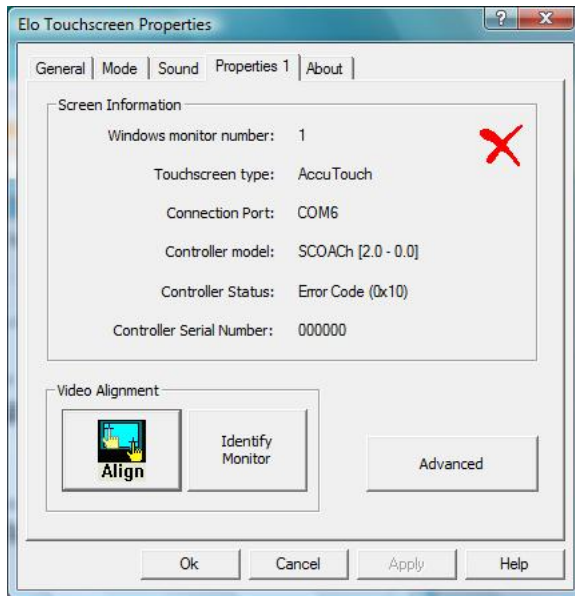
When you changed the resolution / indication method of the display via Intel Graphic Driver, it is recommended that you set the touch panel function using the "Video Alignment" function.

Because the touch panel driver doesn't adjust itself automatically when the setting of graphic is changed. Otherwise the wrong click point of the touch panel might happen unless you do this procedure.

6.2. Limitation

6.2.1. Warning message on Control Panel of Touch Panel driver

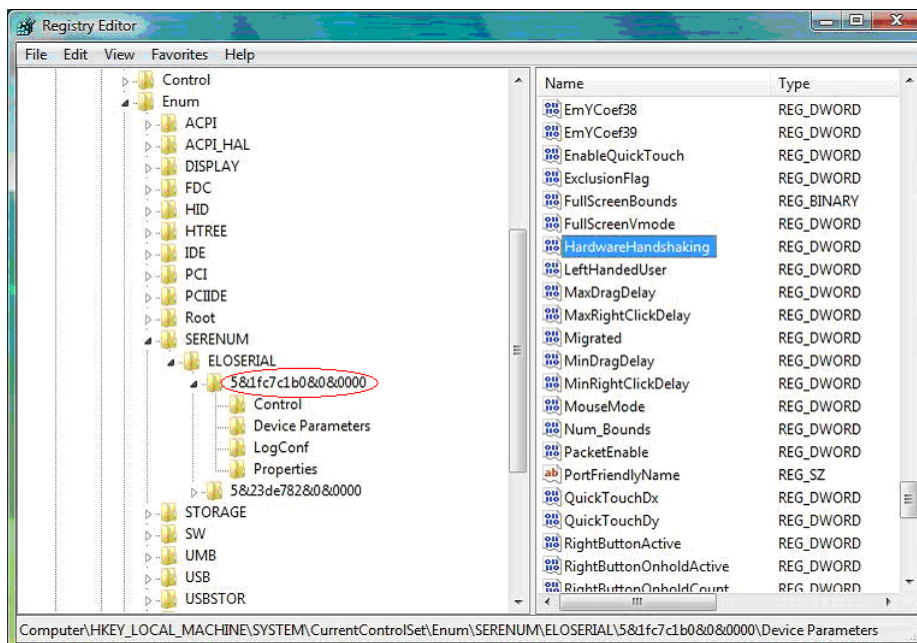
As a default, the ST-B20 shows the following warning on the control panel of the touch panel.



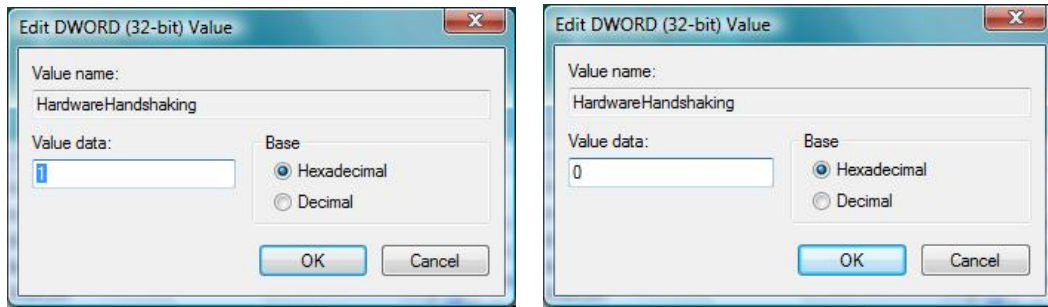
You have to change a value of the next registry to use it definitely.

¥HKEY_LOCAL_MACHINE¥SYSTEM¥CurrentControlSet¥Enum¥SERENUM¥ELOSERIAL¥xxx
xx¥DeviceParameters¥**HardwareHandshaking**

Note: The part of above “xxxx” is a monitor ID. Refer to the following window.

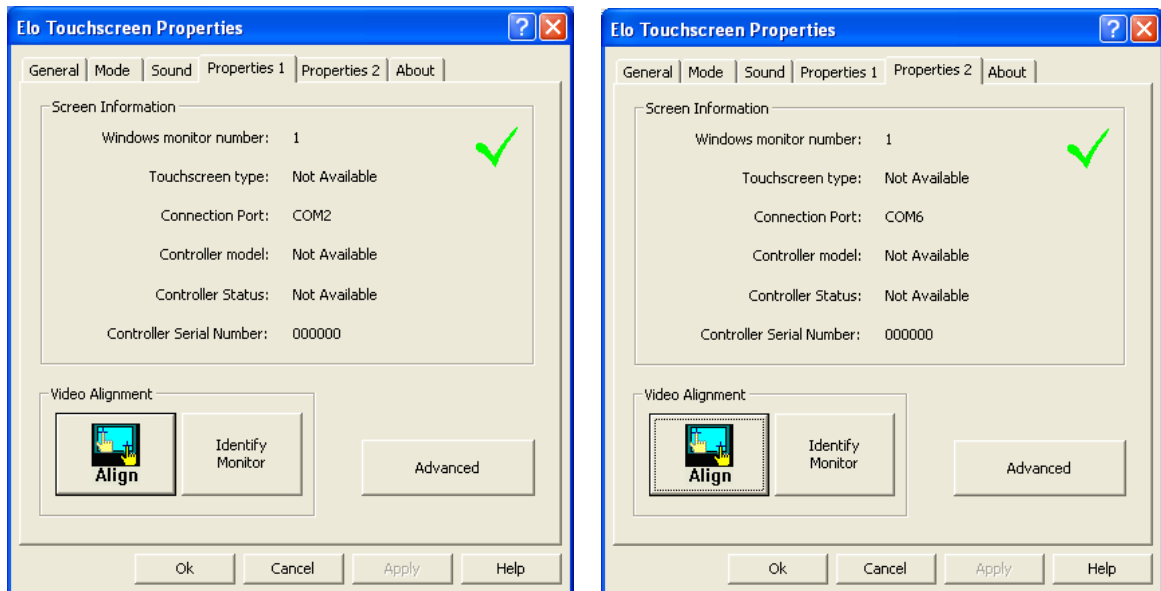


Default is 1 (Left-hand figure). Change it to 0(Right-hand figure).



In "Properties1" and "Properties2" tab, there are three items to become the "Not Available" indication after changing registry setting.

- Touchscreen Type
- Controller model
- Controller Status



It mean, the reason is because it stopped the acquisition / an indication function of the hardware information by a setting change of the registry, and there is not the influence in touch panel performance.